

# IICA



CARIBBEAN DATA BASE

USER'S MANUAL

R:BASE DATABASE

IICA  
C30  
F939

BARBADOS  
NOVEMBER 1988



**IICA-CIDIA**

Centro Interamericano de  
Documentación e  
Información Agrícola

3 1 A. O 1993

**IICA — CIDIA**

**CARIBBEAN DATA BASE**

**PROGRAMMER'S MANUAL**

**R:BASE DATABASE**

**BARBADOS  
NOVEMBER 1988**

11CA  
C30  
F939C

BV-006612

00000000

## CONTENTS

### Foreword

1. Directories Needed
2. Memory Space
3. Installation of Files
4. Creating a Database Step by Step
5. Defining Tables
6. Rules
7. Preparation of a Form
8. Query Screens
9. Preparation of a Menu
10. Preparation of a Report
11. Programming
  - Programmes
  - Flow Charts
  - Menu and Batch Files
  - Debugging the Caribbean Database
12. Maintenance
  - Checking Database Files for Structural Errors
  - Deleting
    - Delete Old Version
    - Reload
  - Backup
  - Renaming Computed Columns
  - Note

### Annexes

1. Entry and Edit Options - Forms
2. Output Options - Reports
3. Tables and Columns - Names, Characteristics and Content
4. R:Base Function Keys
5. R:Base Functions
6. Alt Keys



## FOREWORD

This and its companion manual, the User's Manual, are the documentation of the Caribbean Database developed by the Regional Projects Unit.

This database is part of the support given by the Projects Unit to the Caribbean offices since it will allow to keep up-dated information on the economy and on the agricultural sector. The database should also allow IICA to provide this service to the Ministries of Agriculture of its member countries.

The Caribbean Database is a system based on R:Base 5000 DBMS consisting of macro-economic data and agricultural information.

It's design was guided by three main considerations:

- a. Usefulness of information for IICA's use
- b. Flexibility in data entry and data retrieval, and
- c. User friendliness.

At the Barbados office, a central Data Bank for the Caribbean will be developed with the information provided by our country offices.

The algorithm was developed by the Consultant Cesar Rodriguez and these manuals were prepared by Olwen Frost, from IICA Barbados office.

Gonzalo Estefanell  
Head  
Regional Projects Unit





1. DIRECTORIES NEEDED

Rbfiles

PFS (displays reports - type of word processor)

Barbados (database)

Tools

2. MEMORY SPACE

600 kb main memory

1.3 mb hard disk for installing rbase

1.3 mb hard disk for Caribbean Database system

300 kb hard disk for pfs

3. INSTALLATION OF FILES

Rbase

a:

Insert diskette 1

A>install

Caribbean Database System

md\barbados

cd\barbados

Insert backup diskette 1 in A drive

\dos\restore a:



#### 4. CREATING A DATABASE STEP BY STEP

```
C> cd\work
C> path c:\rbfiles
C> rbase
Escape to R>
R> open [database]
R> rbd(efine)
Menu appears - select define a new database
Select Tables  Add Tables
Enter name for database
Enter table name
Define columns and assign data types
Specify conditions for rows - select column
                                choose operators
                                escape when finished
Escape to Database Definition Menu
Choose option 4
Define data entry rules - add new rule
                                enter error message
(see selection under  select your table and column to which message
 forms)                applies
                                choose operators
                                enter and escape

Escape to R>
R> forms
Create a form - edit/create a form
                                customise forms (usually 2: enter data and edit)
(see section          customise table characteristics
 on forms)           locate data on screen - work area, help screen
                                [F6] for denoting Start and
                                End of each column

                                define a new table [F8]
                                locate other fields
                                define region - customise table characteristics
                                duplicate region
                                mark row to be duplicated

                                escape
                                save changes

Escape to R>
R> ent [formname] (to enter data)
R> edi(t) usi(ng) [formname] (to edit data)
Reports
```



5. DEFINING TABLES

1. Enter name of database
2. Enter name of table
3. Enter names of columns with their character lengths and type (INT, TEXT, REAL, etc.). Also if it is a key table.
4. When finished [Esc] to save.

6. RULES

It is not necessary to define rules. However, it is always a good idea to do so. Select option (4) Rules from the menu. Enter your error message, e.g. Invalid Name, and [Enter]. Choose a table, should there be more than one, and the column you wish to identify conditions for. Conditions can be that the column exists/fails, that it is equal to another column or to a value or is less than or greater than a value. Any one column can have multiple conditions. When the rules are identified, [Esc] to save and return to the menu.

7. PREPARATION OF A FORM

Assuming that our database contains more than one table, we prepare the form for the first and key table. This is region number one.

1. Define rules for each field: Indicate a message to appear on screen, should an error be made, and define expressions, i.e. if particular field should exist, what conditions it must meet, etc.
2. Edit/Create a form: Having selected this option from the menu, select Customise a Form, enter appropriate data, and then Customise a Table, selecting Characteristics.
3. Edit: Choose this option from the top menu and locate your data on the screen, making it look attractive with the Draw option from the menu, to enclose form in a box. Then, using the [F6] function key, state where your columns start (S) and end (E). Remember to save your changes before exiting. Note that a dummy variable should be defined at the end of the row of data, so that you can pause and edit that line if necessary before continuing to the next row.

Now we move on to the next region. Using [F8] to define a new table, we give it a name. Then we transfer common columns from the first region to this one by creating an expression: we assign the value of the column to an external variable, and then assign the value of the variable to the second column. From there we locate other fields as in (3) above. It is advisable to protect the column transferred to region two so that data cannot be changed. This is done by using the [F7] and [F6] keys to change tables and customise respectively.



To define the region, escape to the top menu and select Customise. Select the table characteristics and 'yes' to create the region. Define the space where you want the fields duplicated, and then identify the row you want to duplicate. It is normal to select 'no' when the programme asks if you want a border. Use Shift [F4] to define the area to be duplicated, and enter. Again define your help screen, top menu, and prepare your titles. Remember the convenience of a dummy variable at the end of a row.

When this is completed, remember to save your changes. You should now be ready to start entering data into your database.

## 8. QUERY SCREENS

A query screen should be as similar as possible in appearance to the relevant entry and edit form. The main difference is that you do not enter all the data on the form, only that which is asked for for searching.

Prepare in the following manner using the Tools Directory:-

```
R>ent TABLENAME
[Esc]
R>zip \rbfiles\tools\scrnfile FILENAME
```

## 9. PREPARATION OF A MENU

```
Draw menu:   rbe FILENAME
              draw ([F4] repeats use of function keys)
              note where the input is to be placed, i.e.
              "Enter # of your selection: ___"
              Save
              ren FILENAME FILENAME.men
              (gives the file a menu extension)
```

```
To program:  rbe PROGRAM NAME
              cls (clears screen)
              cle all var (clears all variables)
              set v voption text (defines variable)
              set v voption = 0 (assigns value to variable)
              disp FILENAME.men (displays menu)
```

```
Loop        ( while voption LT 1 or voption GT 2 then
              (   write " " at (input space)
              (   fill voption = 1 using " " at _____
              (   endwhile
```





## 10. PREPARATION OF A REPORT

Type rep at the R> prompt or select the appropriate option from the menu and [Enter]. Enter database and table name to be used-remember if there are multiple tables in the database the report must be identified by the lowest table (last region in form).

Select Configure from the top menu and [Enter]. Identify page length, footers and headers, etc. Breaks 1 - 10 can be identified. A break is what you want to sort the report by. For example, if you wish a print out by year, Break 1 could be year.

The Edit your report in the same way as with a form. The difference here is the different levels the report has: Report Header (RH), Page Header (PH), Levels 1 - 10 (H), Details (D), Footer for levels (F), Page Footer (PF) and Report Footer (RF). To insert these levels, use [F9] for expand (create space to define levels) and [F8] to move to the next section. When all the levels are defined, turn off the expand mode with [F8]. Shift tab puts you into the margin to change lines; tab takes you back to the screen.

The title of the report is typed at the RH level and information that is to be displayed at the top of each page, at the PH level. Details of the report, i.e. the rows of data, should be entered at the D level.

Once all information is entered, save the report and exit to the R> prompt. From there you can print out the report if a menu is not done for it. The command would be out print ; pri REPNAME sort by ..... ; out screen (where out print and screen send the output to the printer and screen respectively).

Following are 5 easy steps to use for preparing a report:

1. Design output on paper
2. Locate table (see Annex 3)
3. Locate columns  
Define break  
Define variables/columns; expressions
4. Configure
5. Edit/Draw/Locate



11. PROGRAMMING

Steps

Define variable	set v(ar) <u>NAME</u> <u>TYPE</u> (INT/TEXT)
Assign values	set v <u>NAME</u> = _____
Conditions	While <u>CONDITION</u> then _____ Endwhile
	If ..... Endif
Subroutine	Quit to <u>FILE NAME</u>

Definitions and Commands

Fill = Input

Set Null " "

Set Zero on (for mathematical work)

Set Null on

Set Mess on (computer messages)

Set Err Mess on (error messages)

Out Print/Screen/FILE NAME

Delete rows from TABLENAME where CONDITION

Set v xx = tit\_info in typeinfo where num-into = .vopt

set v all text

set v all = "enter FLTAB^"

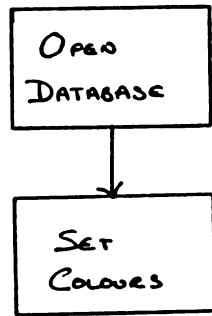
&all

Following are programs from the Caribbean Database System and their relevant flow charts.



pen barba  
set col back black  
set col fore gray  
return

1  
2  
3  
4  
5  
6  
7  
8  
9  
10  
11  
12  
13  
14  
15  
16  
17  
18  
19  
20  
21  
22  
23  
24  
25  
26  
27  
28  
29  
30  
31  
32  
33  
34  
35  
36  
37  
38  
39  
40  
41  
42  
43  
44  
45  
46  
47  
48  
49  
50  
51  
52  
53  
54  
55  
56  
57  
58  
59  
60  
61  
62  
63  
64  
65  
66  
67  
68  
69  
70  
71  
72  
73  
74  
75  
76  
77  
78  
79  
80  
81  
82  
83  
84  
85  
86  
87  
88  
89  
90  
91  
92  
93  
94  
95  
96  
97  
98  
99  
100







```
label main
set v voption INT vborra TEX
set v voption = 0 vborra = " "

cls
disp main.men at 8

while voption LT 1 or voption GT 4 then
  write .vborra at 15 61
  fill voption = 1 usi " " at 15 61
endw

if voption fails then
  cls
  set mess on
  set err mess on
  set esc on
  set bell on
  quit
endif

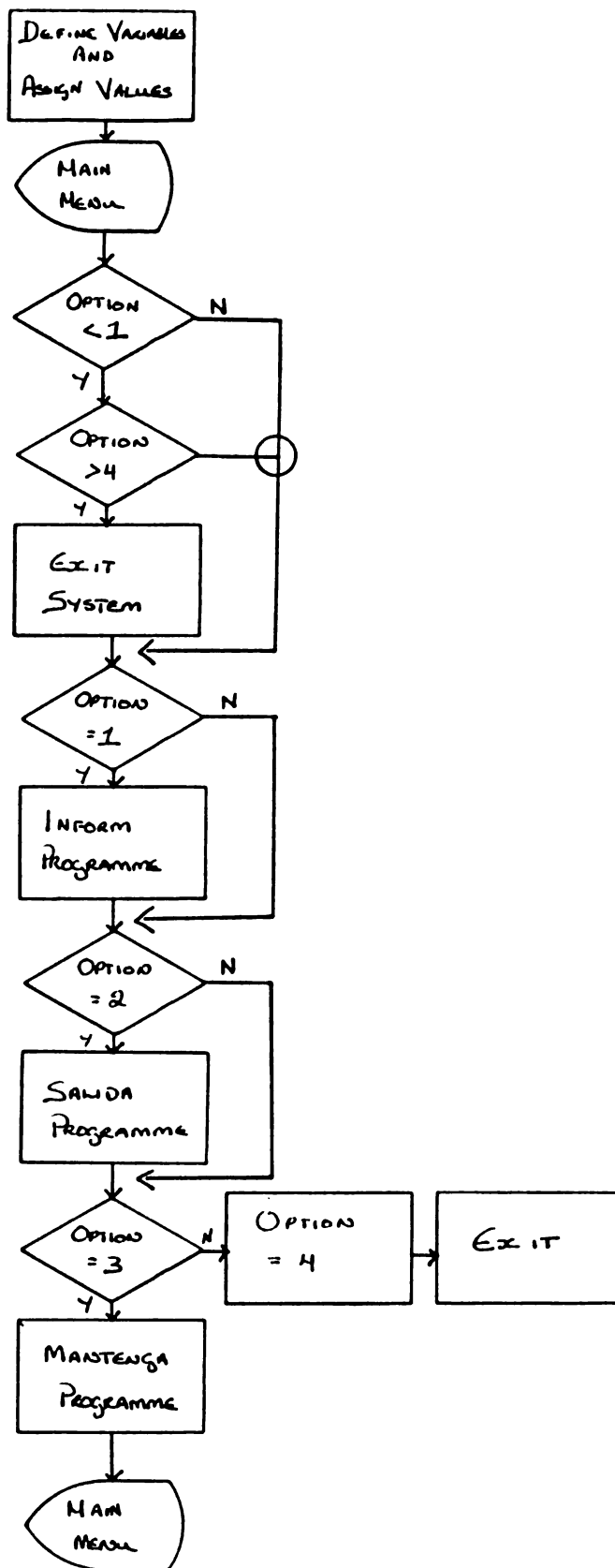
if voption EQ 1 then
  quit to inform
endif

if voption EQ 2 then
  quit to salida
endif

if voption EQ 3 then
  run mantenga
  goto main
endif

if voption EQ 4 then
  exit
endif
```







```
( INFORM: choose type of information for Entry or Edit )
```

```
ls
```

```
set v voption int vborra tex
```

```
set v voption = 0 vborra = " "
```

```
set lines 24
```

```
disp inform.men
```

```
while voption LT 1 or voption GT 22 then
```

```
write .vborra at 23 46
```

```
fill voption = 2 usi " " at 23 46
```

```
endw
```

```
if voption fail then
```

```
quit to main1
```

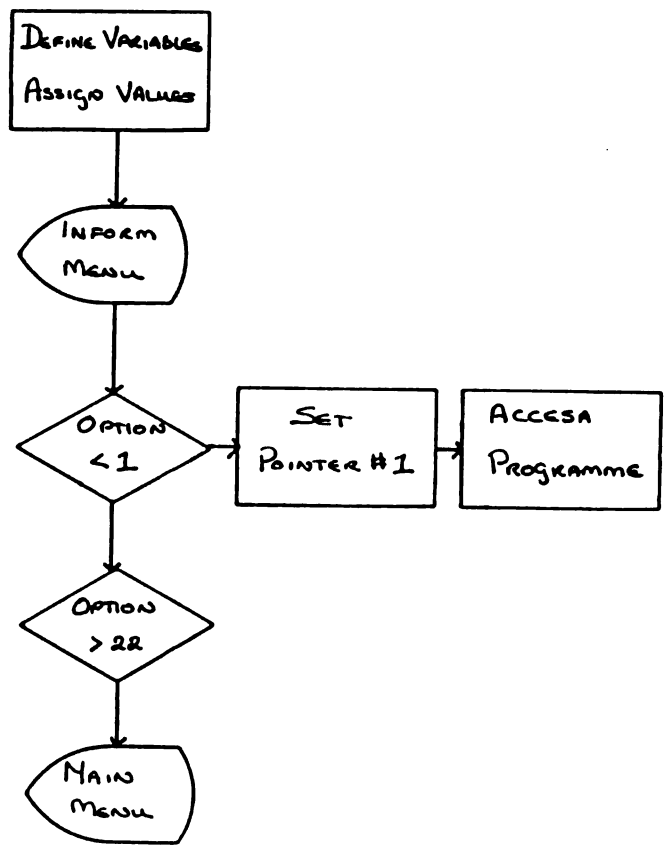
```
else
```

```
set poi #1 e1 for TYPEINFO whe num_info = .voption
```

```
quit to accesa
```

```
endif
```









( ACCESA: choose Entry or Edit )

```
set v voption INT vborra TEX vtit TEX
set v vtit = tit_info IN #1
set v voption = 0 vborra = " "
```

```
cls
write "Type of Information:"
write .vtit
disp accesa.men at 8
```

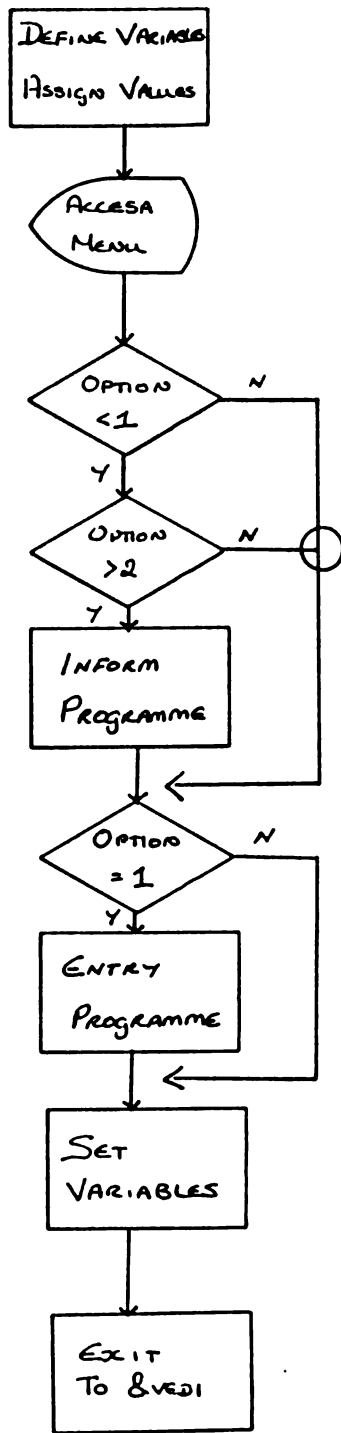
```
while voption LT 1 or voption GT 2 then
  write .vborra at 13 61
  fill voption = 1 usi " " at 13 61
endw
```

```
if voption fails then
  clear all var
  quit to inform
endif
```

```
if voption = 1 then
  quit to entry
endif
```

```
if voption = 2 then
  set v vedi tex
  set v vedi = edicion IN #1
  quit to &vedi
endif
```



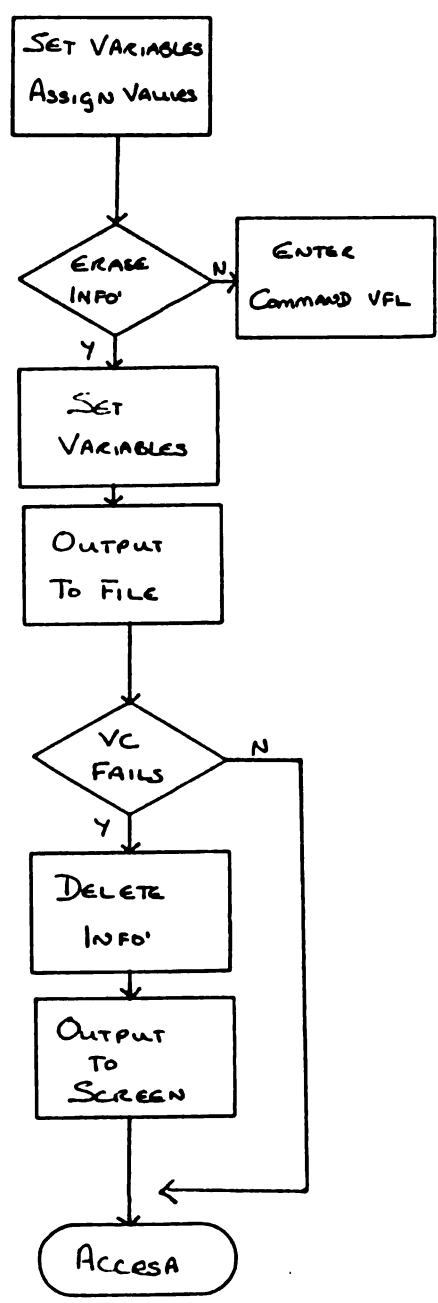




( Entry data )

```
cle all var
set v vfl TEX vd TEX
set v vfl = ent_info IN #1
set v vd = bor_info IN #1
if vd = "N" then
  enter &vfl
else
  set v vt TEX vc TEX
  set v vt = tab_info in #1
  set v vc = col_info in #1
  enter &vfl
  out basura
  del fro &vt whe &vc fails
  out scr
endif
quit to accesa
```









## LABEL MENUSAL

```

cls
clear all var
set v voption = 0
set v vborra = " "
set lines 24
disp salida.men
set lines 20

while voption LT 1 or voption GT 27 then
  write .vborra at 23 46
  fill voption = 2 usi " " at 23 46
  if voption fai then
    quit to main1
  endif
  out basura
  set poi #1 e1 for TYPEOUT whe num_rep = .voption
  out scr
  if e1 NE 0 then
    set v voption = -1
  endif
endif
endw

```

## LABEL SALIDA

```

set err var verror
set v vopsale INT vborra TEX vtit_rep TEX vwid_rep TEX vpro_rep TEX +
  vcap_err INT vout TEX vtyp_rep text vrun_rep tex +
  vcol_rep tex

set v vtit_rep = tit_rep vwid_rep = wid_rep vtyp_rep = typ_rep +
  vcol_rep = col_rep vrun_rep = run_rep +
  vnom_rep = nom_rep vpro_rep = pro_rep IN #1
set v vopsale = 0 vborra = " "

If vtyp_rep = 1 then
  run rlevel1
else.
  If vtyp_rep = 2 then
    run rlevel2
  else
    If vtyp_rep = 3 then
      run rlevel3
    endif
  endif
endif

set lines 24
cls from 3
disp tosalida.men at 9
set lines 20

while vopsale LT 1 or vopsale GT 3 then
  write .vborra at 15 61
  fill vopsale = 1 usi " " at 15 61
endw

if vopsale fails then

```



```
endit
```

```
if vrun_rep = Y then  
  cls  
  write " Preparing files .....Wait " at 12 30 white  
  run .vpro_rep  
endif
```

```
if vopsale = 1 then  
  set err mess off  
  cls ; wri " Wait ..... " at 12 35 white  
  goto sale  
endif
```

```
if vopsale = 2 then  
  if vwid_rep = "L" then  
    cls  
    beep  
    wri " This report needs 15 inches width paper and Condensed Letter." +  
      at 12 10  
    set v vsino text ; set v vsino = m  
    while vsino NE y and vsino NE n then  
      fill vsino = 0 usi "Continue (y/n)? " at 24 60  
    endw  
    if vsino EQ n then  
      quit to main1  
    endif  
  endif  
  cls ; wri " Wait ..... " at 12 35 white  
  out pri  
  goto sale  
endif
```

```
if vopsale = 3 then  
  set v vborra = " "  
  set v vcap_err = 1  
  whi vcap_err NE 0 then  
    wri .vborra at 14 53  
    beep  
    fill vnom_fil = 7 usi "Type and [enter] DOS-File Name: " at 14 22  
    set err mess off  
    ren basura .vnom_fil  
    set v vcap_err = .verror  
    set err mess on  
  endw  
  set v vsino text ; set v vsino = m  
  while vsino NE y and vsino NE n then  
    fill vsino = 0 usi "Continue (y/n)? " at 24 60  
  endw  
  if vsino EQ n then  
    quit to main1  
  endif  
  ren .vnom_fil basura  
  cls ; wri " Wait ..... " at 12 35 white  
  out .vnom_fil  
  pri &repint  
  out scr  
  goto menusal  
endif
```

LABEL SALE

```
if vopsale EQ 1 then
```



zip folio... Command /c /p15 /p... /barbados /provi.1ep

return

endif

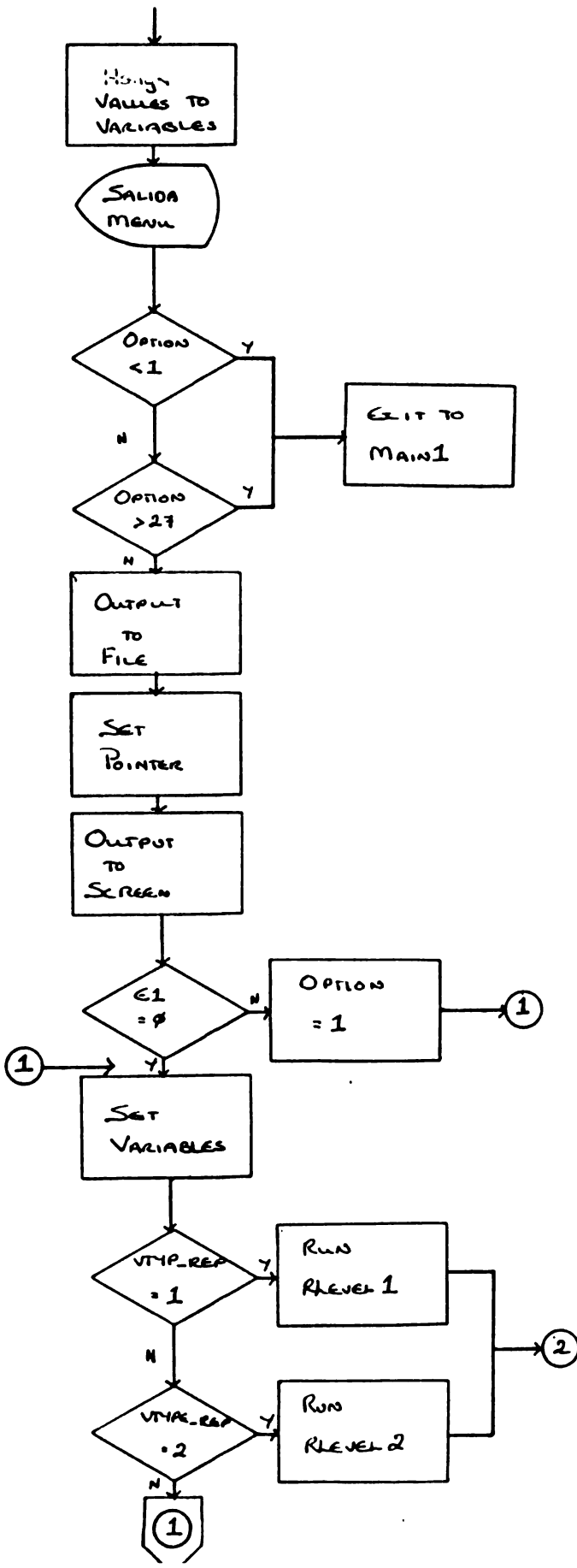
prin &repint

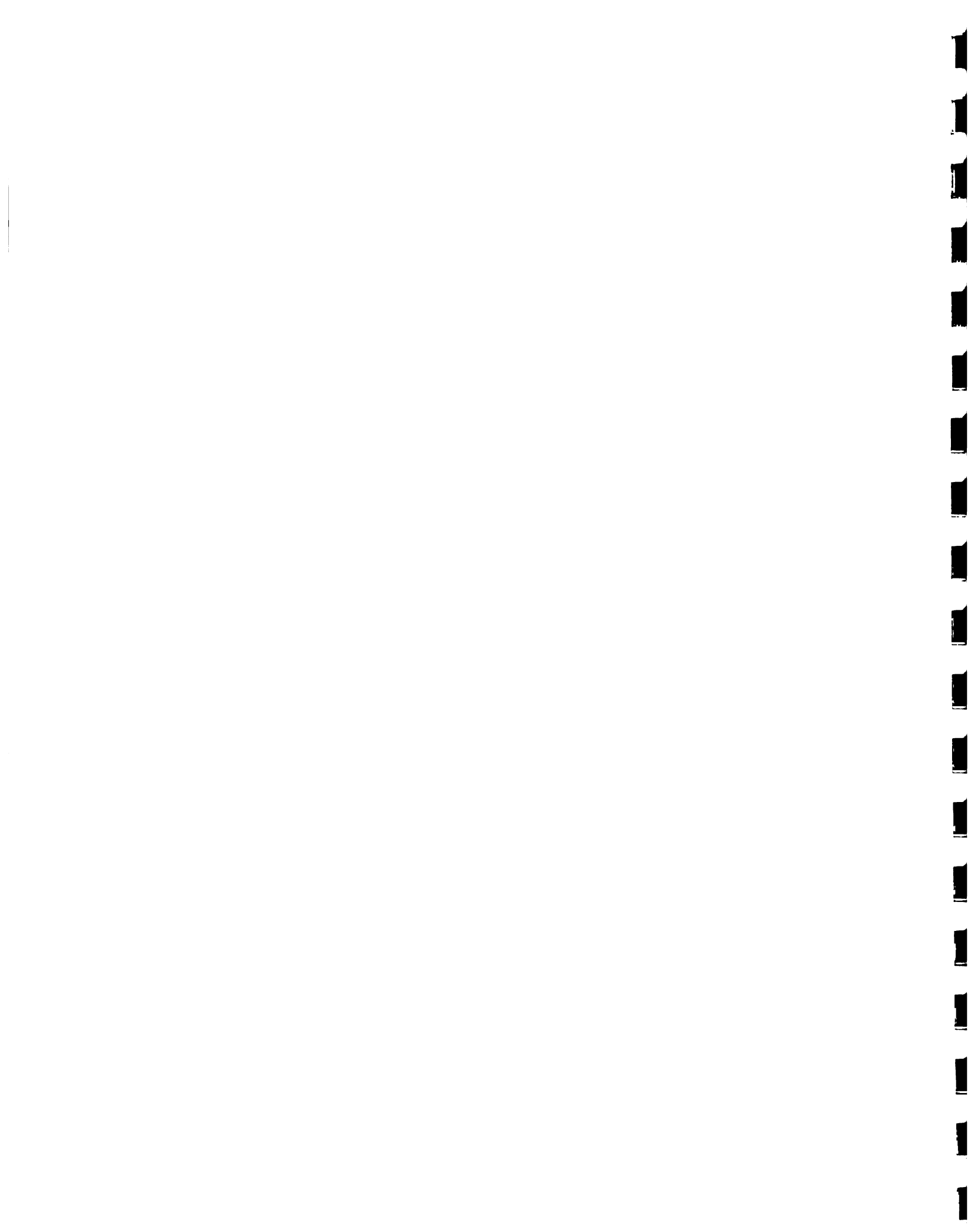
ut scr

quit to main1

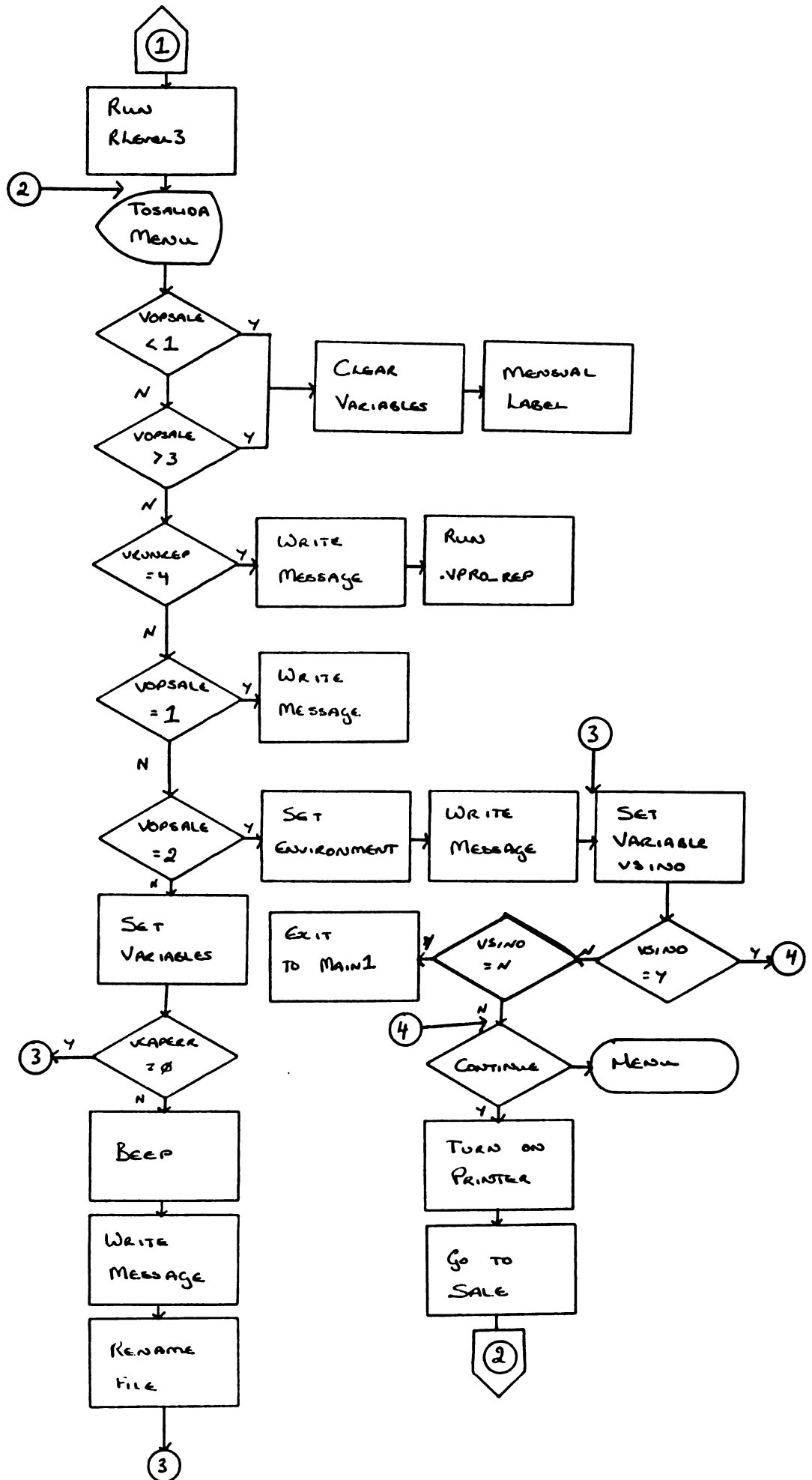


LABEL MANUAL











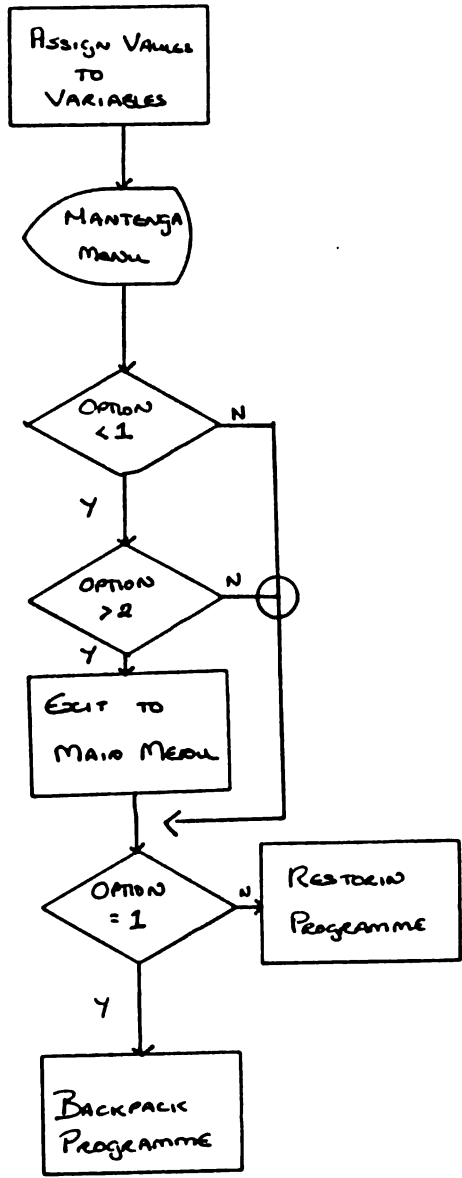
```
els
set v voption = 0
set lines 24
isp mantenga.men at 8
set lines 20

while voption LT 1 or voption GT 2 then
  write .vborra at 13 61
  fill voption = 1 usi " " at 13 61
endw

if voption fails then
  quit to main1
endif

if voption EQ 1 then
  quit to backpack
else
  if voption EQ 2 then
    quit to restorin
  endif
endif
```







```
( Rlevel1: Reports by Country )
```

```
LABEL INICIA
```

```
cls
wri "Query for Output:" at 1 1
wri .vtit_rep at 2 1
set v vccount tex vncount text vsiga tex repint text repint1 tex
set v vncount = " "
disp rquery1.scr at 9
```

```
whi vncount = " " then
fill vncount = 15 usi "" at 11 34
if vncount fail then
set v vccount = "?"
break
else
out basura
set v vccount = ccountry in Tcountry whe ncountry = .vncount
out scr
endif
if vccount fail then
set v vncount = " "
wri " - ERROR - Country not registered. Press any key " +
at 1 1 white
fill vsiga usi "" at 1 62
wri "Query for Output: " +
at 1 1
wri " " at 11 34
endif
endw
```

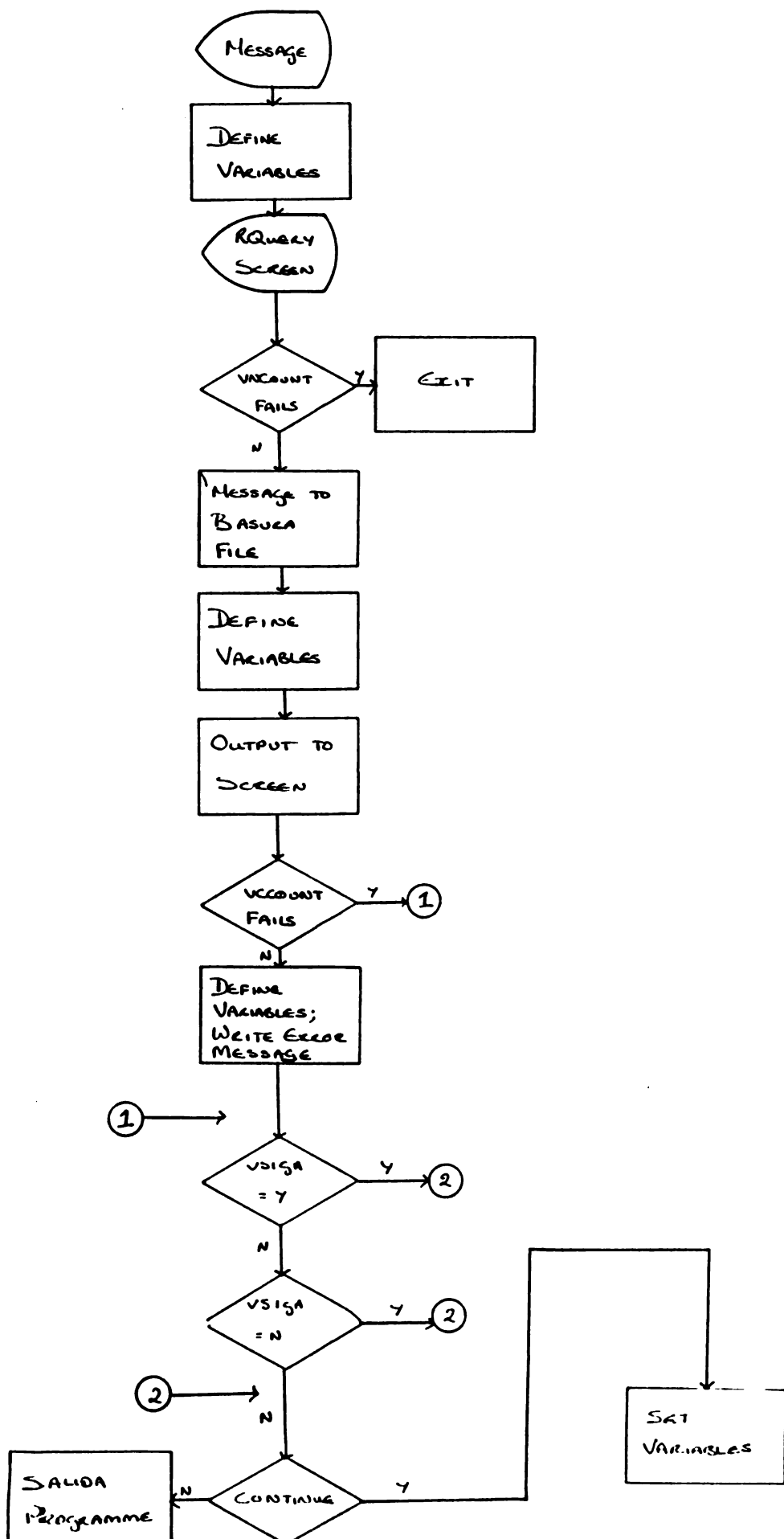
```
set v vsiga = " "
while vsiga NE y and vsiga NE n then
cls fro 24 to 24
fill vsiga = 0 usi "Continue (y/n)? " at 24 55
endw
```

```
if vsiga EQ n then
quit to salida
endif
```

```
set v repint1 = .vccount
set v repint = .vnom_rep & "whe" & .vcol_rep & "=" & .repint1
return
```









( Rlevel2: Reports by Country and Year )

TABEL INICIA

ls

wri "Query for Output:" at 1 1

wri .vtit\_rep at 2 1

set v vccount tex vncount text vye tex vsiga tex repint tex repint1 tex

set v vncount = " " vye = 49

disp rquery2.scr at 9

whi vncount = " " then

fill vncount = 15 usi "" at 11 30

if vncount fail then

set v vccount = "?"

break

else

out basura

set v vccount = ccountry in Tcountry whe ncountry = .vncount

out scr

endif

if vccount fail then

set v vncount = " "

wri " - ERROR - Country not registered. Press any key " +

at 1 1 white

fill vsiga usi "" at 1 62

wri "Query for Output:"

at 1 1

wri " " at 11 30

endif

endw

whi vye LT 50 or vye GT 99 then

fill vye = 2 usi "" at 11 60

if vye fail then

set v vye = "??"

break

endif

if vye LT 50 or vye GT 99 then

wri " - ERROR - Year out of range. Press any key " +

at 1 1 white

fill vsiga = 0 usi "" at 1 59

wri "Query for Output:"

at 1 1

wri " " at 11 60

endif

endw

set v vsiga = " "

while vsiga NE y and vsiga NE n then

cls fro 24 to 24

fill vsiga = 0 usi "Continue (y/n)? " at 24 55

endw

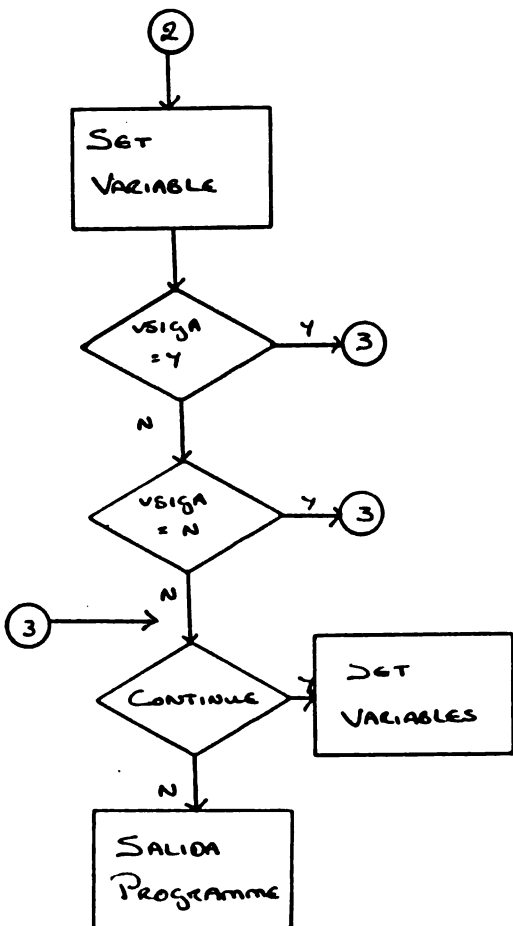
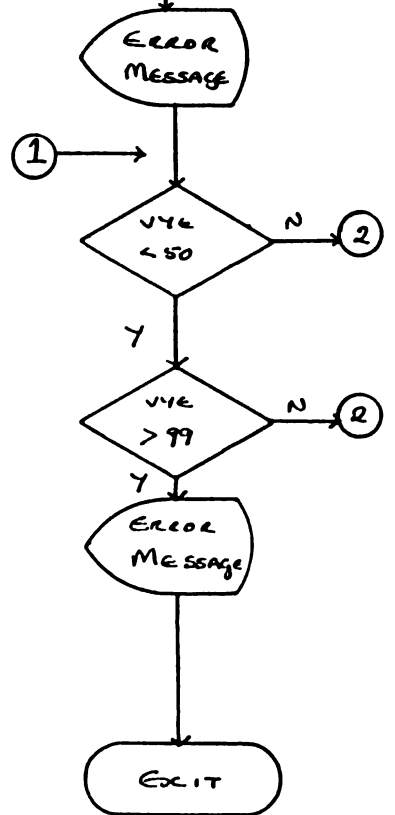
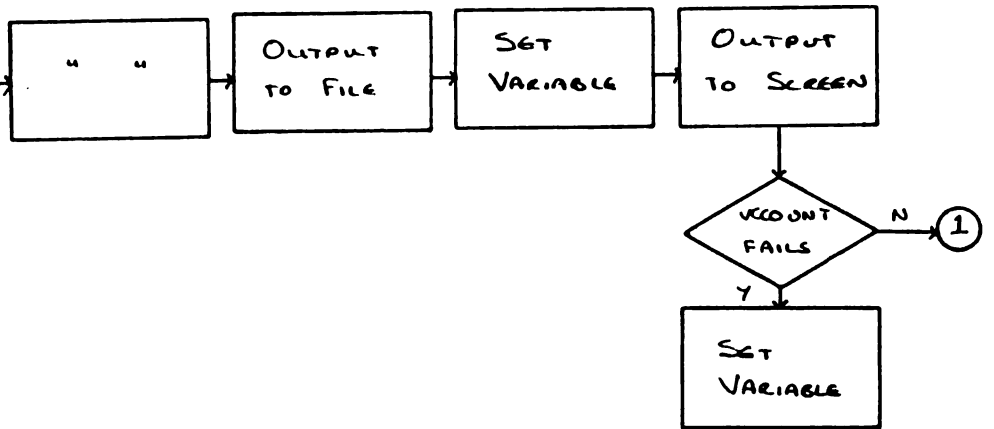
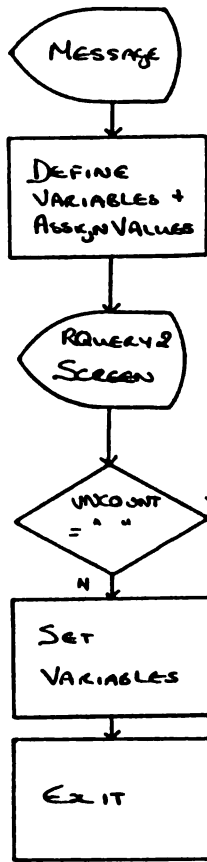
if vsiga = n then

quit to salida

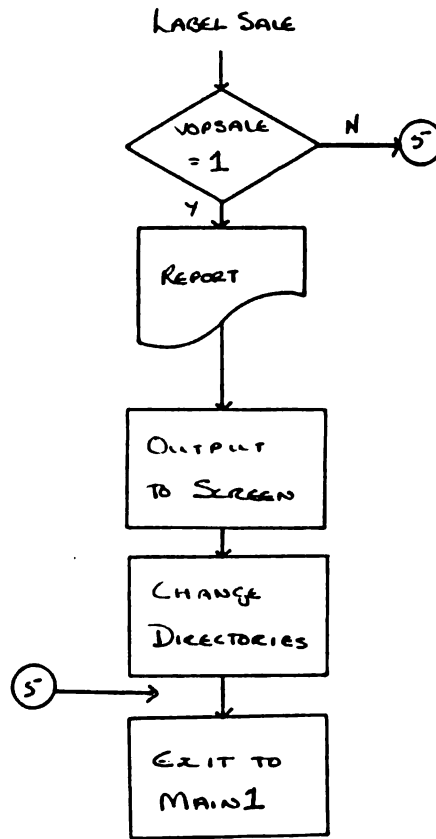
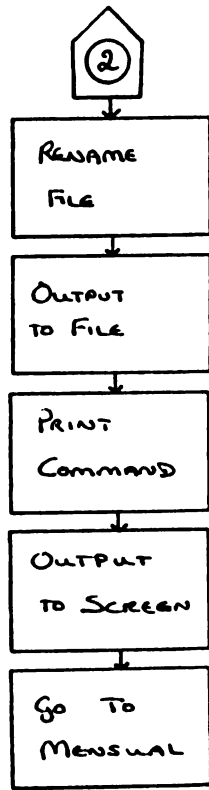
endif

set v repint1 = vccount + vye













\*( Rlevel3: Reports by Country, Year and Type of Production )

LABEL INICIA

cls

wri "Query for Output:" at 1 1

wri .vtit\_rep at 2 1

set v vccount tex vncount text vcprod text vnprod tex vye tex vsiga tex

set v repint tex repint1 text

set v vncount = " " vnprod = " " vye = 49

disp rquery3.scr at 9

whi vncount = " " then

fill vncount = 15 usi "" at 11 34

if vncount fail then

set v vccount = "?"

break

else

out basura

set v vccount = ccountry in Tcountry whe ncountry = .vncount

out scr

endif

if vccount fail then

set v vncount = " "

wri " - ERROR - Country not registered. Press any key " +  
at 1 1 white

fill vsiga usi "" at 1 62

wri "Query for Output:"

at 1 1

wri " " at 11 34

endif

endw

whi vye LT 50 or vye GT 99 then

fill vye = 2 usi "" at 11 64

if vye fail then

set v vye = "??"

break

endif

if vye LT 50 or vye GT 99 then

wri " - ERROR - Year out of range. Press any key " +  
at 1 1 white

fill vsiga = 0 usi "" at 1 59

wri "Query for Output:"

at 1 1

wri " " at 11 64

endif

endw

whi vnprod = " " then

fill vnprod = 15 usi "" at 12 34

if vnprod fail then

set v vcprod = "??"

break

else

out basura

set v vcprod = cproduct in Tproduct whe nproduct = .vnprod

out scr

endif



W11 Product not registered. Press any key " +

at 1 1 white

fill vsiga = 0 usi "" at 1 62

wri "Query for Output: " +

at 1 1

wri " " at 12 34

endif

endw

set v vsiga = " "

while vsiga NE y and vsiga NE n then

cls fro 24 to 24

fill vsiga = 0 usi "Continue (y/n)? " at 24 55

endw

if vsiga = n then

quit to salida

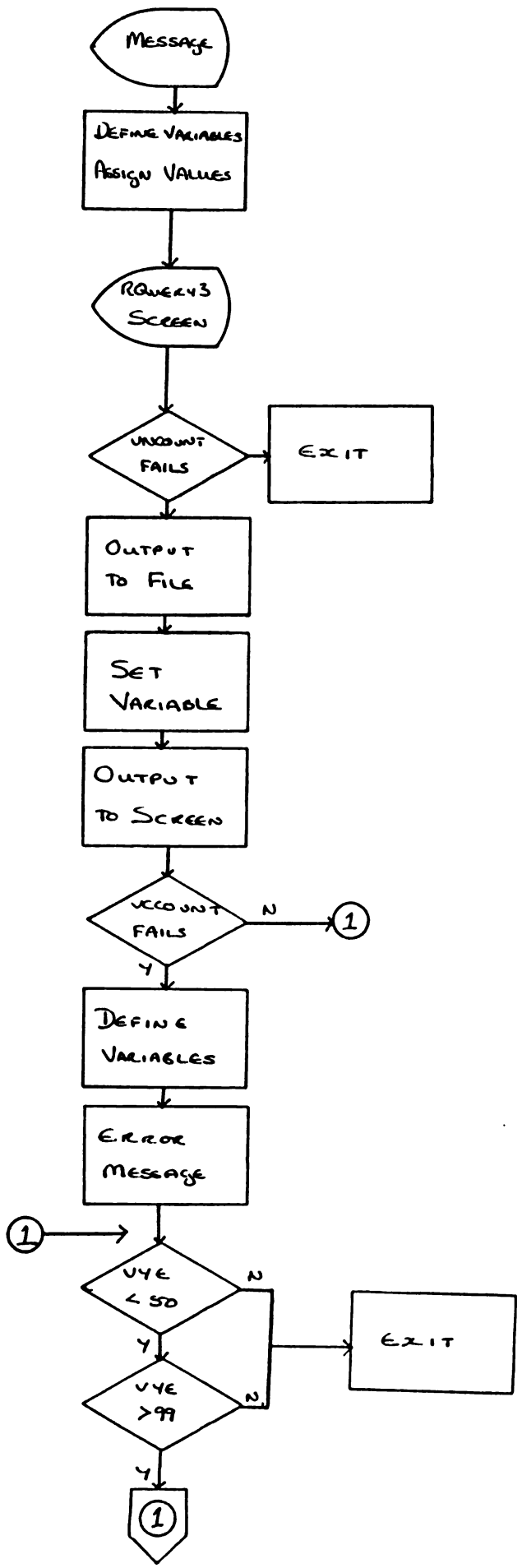
endif

set v repint1 = .vccount + .vye + .vcprod

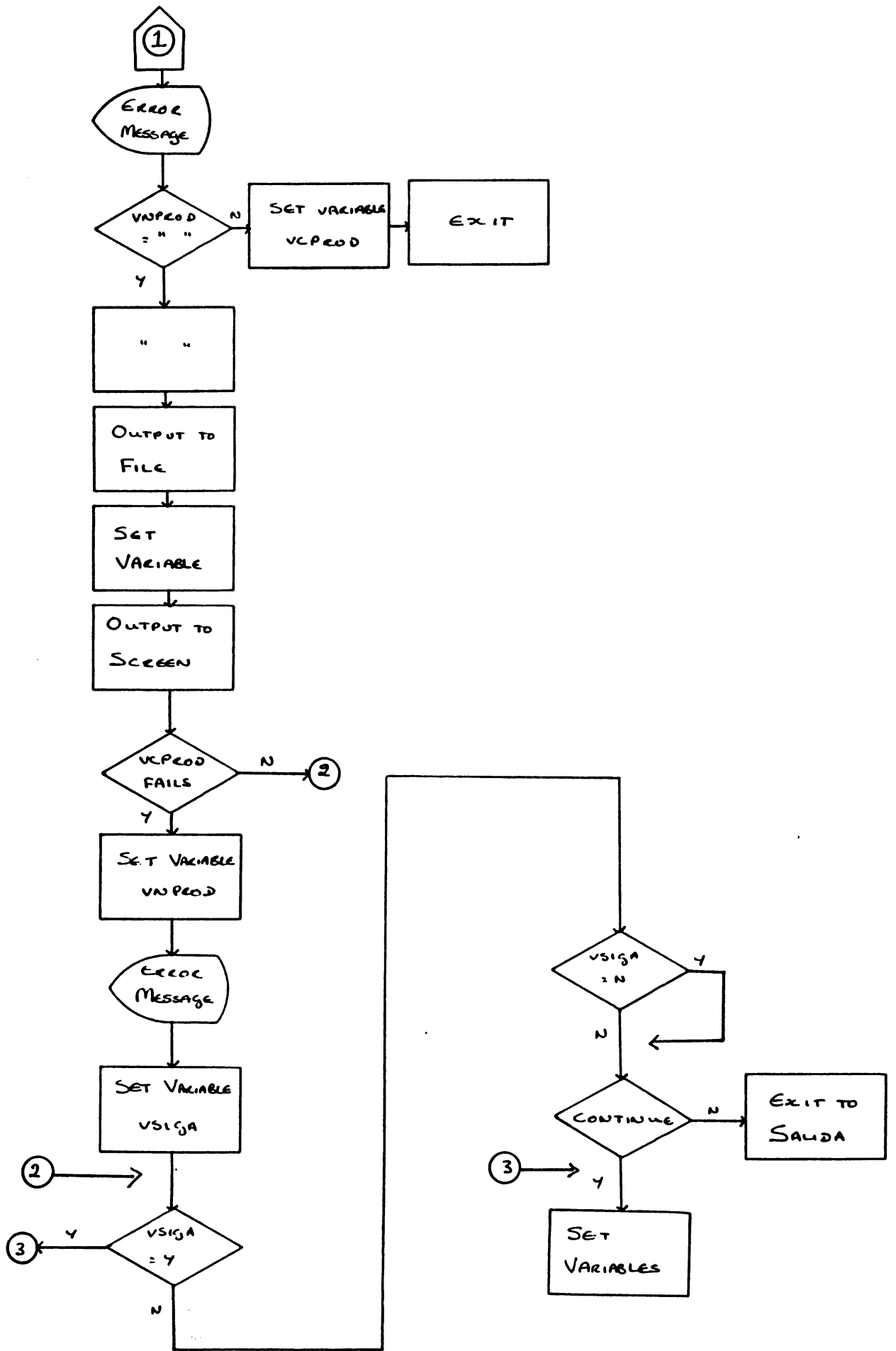
set v repint = .vnom\_rep & "whe" & .vcol\_rep & "=" & .repint1

return













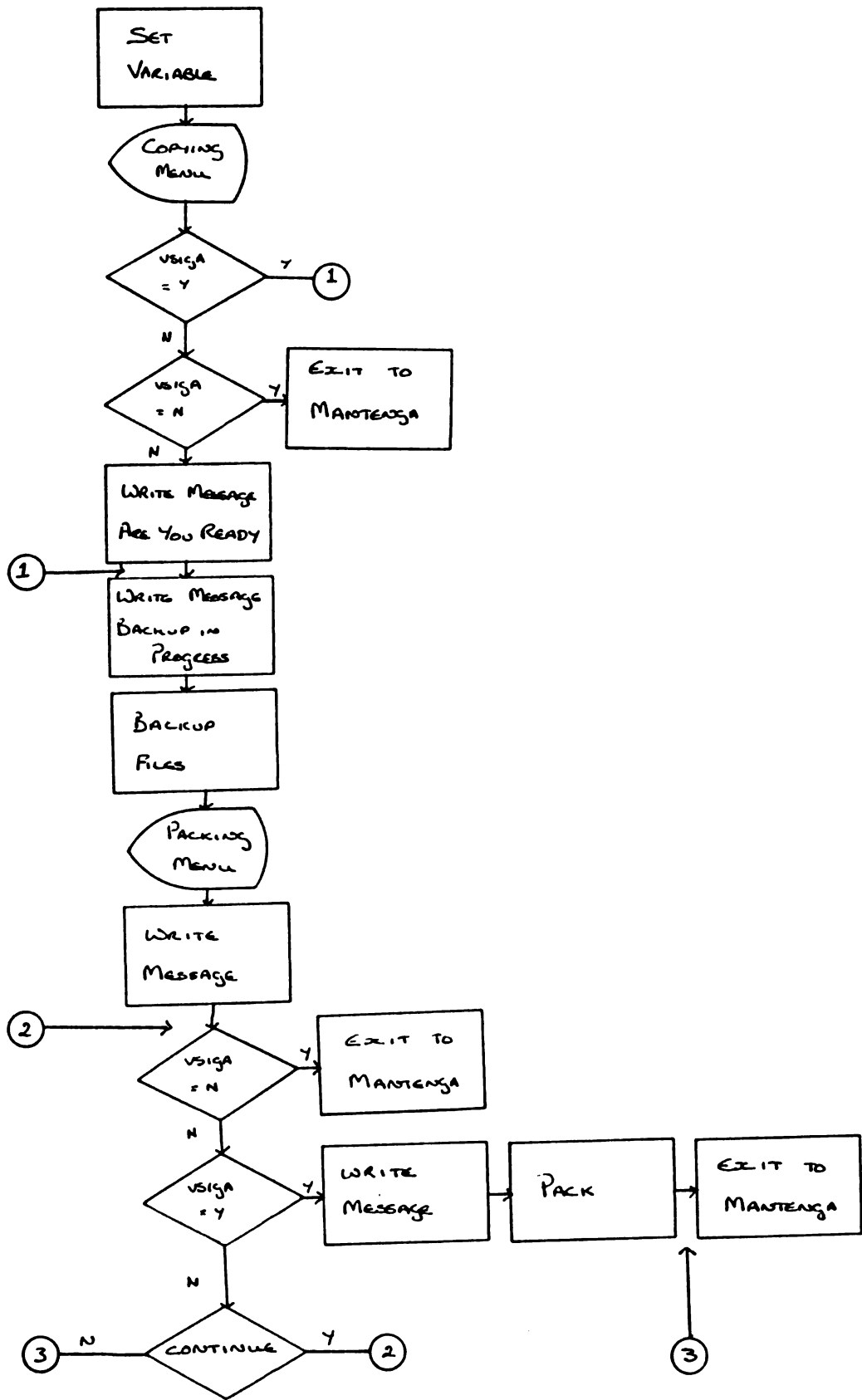
```
cls
set v vsiga = "f"
display copying.men
whi vsiga NE "n" and vsiga NE "y" then
  fill vsiga = 0 usi "Are you ready (y/n)?" at 23 50
endw
if vsiga EQ "n" then
  quit to mantenga
endif
```

```
cls
write "Backup in progress: if you need to interrupt this process, press +
<Ctrl-C>" at 1 1 white
wri "      " at 2 1
zip \dos\backup barba*.* a:
```

```
cls
display packing.men
wri "IF BACKUP WAS NOT SUCCESSFULLY COMPLETED DO NOT CONTINUE NEXT PROCESS" +
  at 10 4 white
set v vsiga = "f"
whi vsiga NE "n" and vsiga NE "y" then
  fill vsiga = 0 usi "Continue (y/n)?" at 23 50
endw
if vsiga EQ "n" then
  quit to mantenga
endif
```

```
cls
wri "DO NOT INTERRUPT THIS PROCESS .... wait " at 12 25 white
pack
quit to mantenga
```

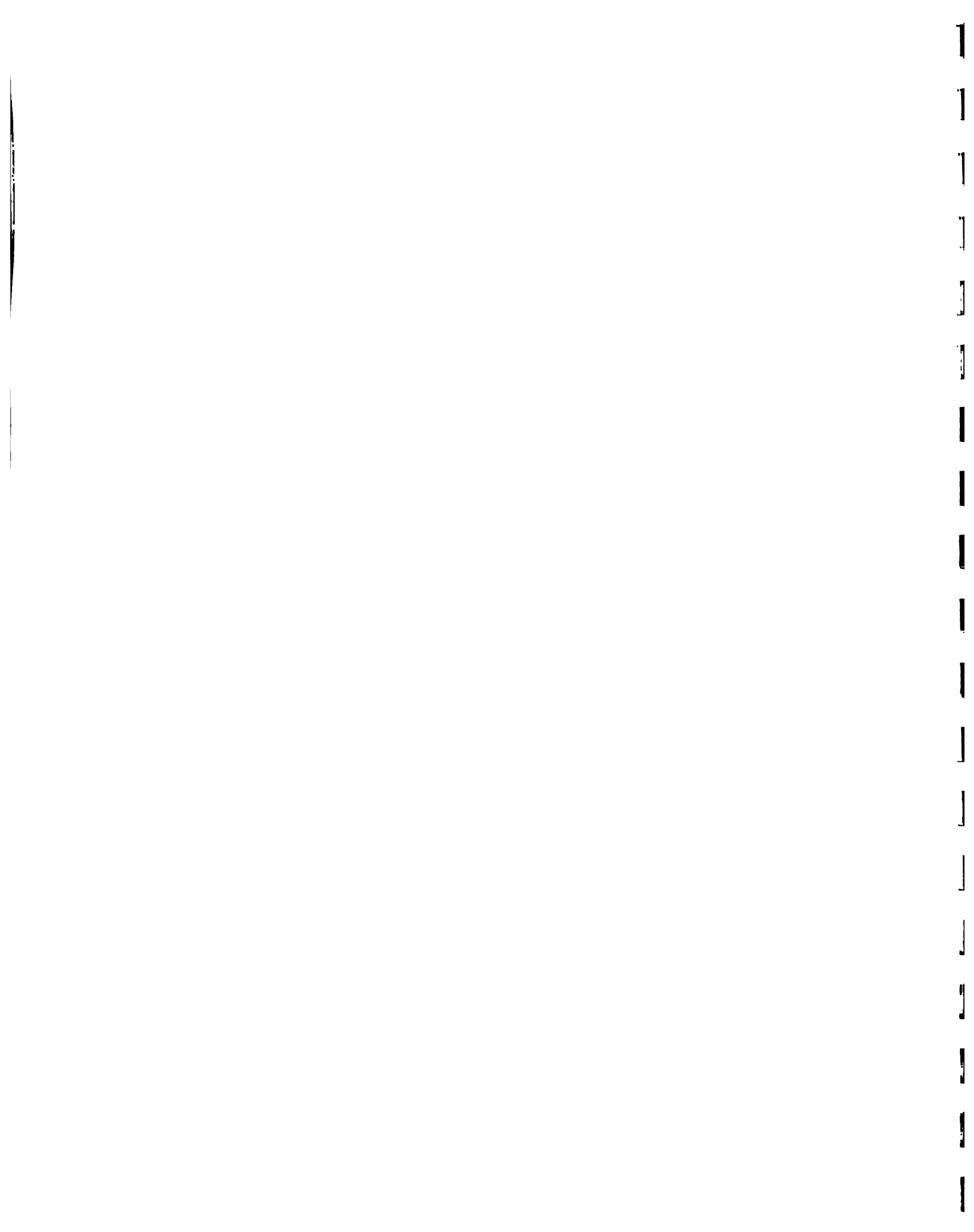


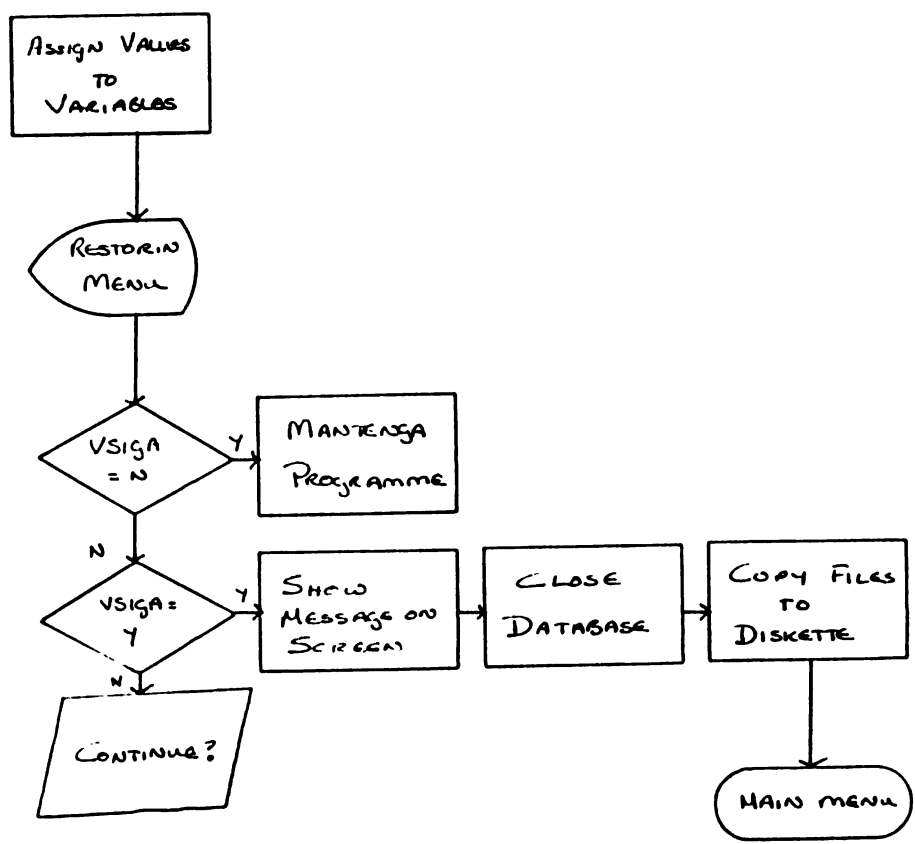




```

:ls
set v vsiga = "f"
display restorin.men
set v vsiga = "f"
:whi vsiga NE "n" and vsiga NE "y" then
    fill vsiga = 0 usi "Continue (y/n)?" at 23 50
:endw
:if vsiga EQ "n" then
    quit to mantenga
:endif
:ls
wri "DO NOT INTERRUPT THIS PROCESS .... wait " at 1 1 white
:close
:ip \dos\restore a:
quit to main
```









## Menu and Batch Files

When the computer is turned on or booted (re-started without switching it off and on again), an options menu will appear on the screen, with the instruction "Type # of option and [Enter]". Choose the programme you wish to operate and type its number (no. 4 for rbase). This automatically executes that programme and takes you to the first screen.

A menu like this is created using batch files. A batch file (extension .BAT) is a file where a string of commands is stored. On typing the name of the file and [Enter], these commands are executed. Hence for each option on the menu, there is a .BAT file and there is also one for bringing the menu on to the screen.

### How Does the Menu's System Operate?

1. Directory Select contains:

```
MENU.DOC
MENU.BAT
X.BAT
X.BAT
X.BAT
X.BAT
```

2. MENU.DOC contains the menu screen; you can change it with Word Processor in the form of DOS file.

3. MENU.BAT contains:

```
Echo off
Cls
cd\Select
Type Menu.doc
```

4. Each X.Bat contains:

```
Echo off
Cls
... )
... ) instructions for running the application.
... )
\menu
```

5. To create a batch file, use the command `\dos\edlin_` (batch file name.bat), where `\dos` is the directory and `\edlin_` is the programme used. "l" lists the file, "i" enables you to insert, "q" to quit editing, "e" to exit. By typing a number that is already entered, you can edit that particular command. You can also use the Word Processor in File Dos mode.



6. It is convenient to copy Menu.bat to all directories, including the main directory.

### Debugging the Caribbean Database

1. When editing forms and sorting by column, sometimes forms won't let you see next/previous record. Create a dummy variable in form (just define - do not locate).
2. Countries must be registered before they can be worked with. The same goes for products.
3. "Record Already Registered" will show on screen when not true. Change country name, enter information, change country name back to what it was.

## 12. MAINTENANCE

### Checking Database Files for Structural Errors

Use DOS commands.

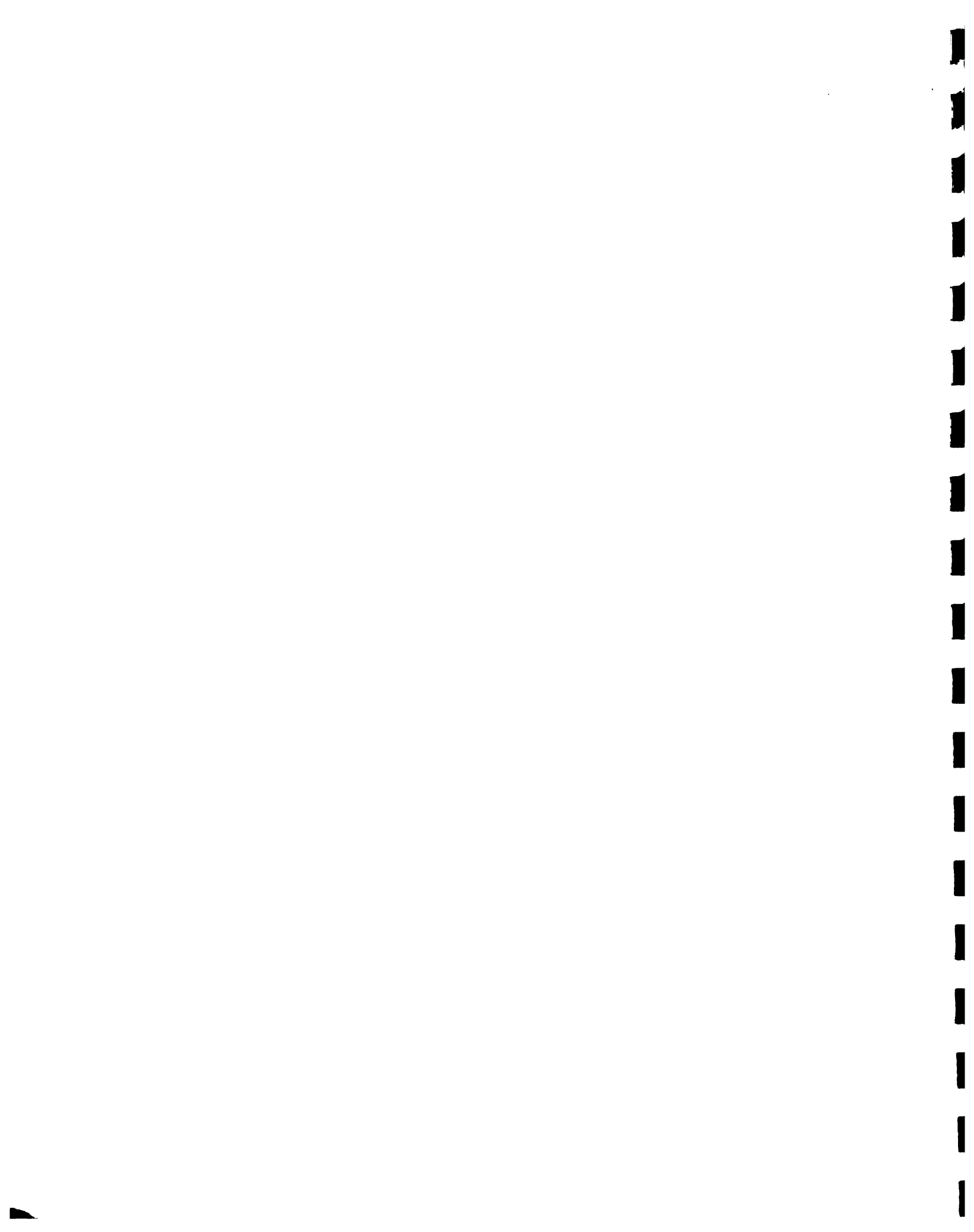
```
create dir reload (dbase to be copied there)
cd\barbados
\rbfiles\tools\rbcheck DATABASE NAME
```

If errors are found, instal previous version of the database and re-enter information. Checks should be done to the database when one deletes frequently.

### Deleting

```
pro del
del rows where name exists or name fails (deletes all rows)
exit rbase
\rbase\tools\rbcheck DATABASE NAME - once o.k. return to rbase
erase \reload
rel \reload\DATABASE NAME
dir *.rbf - gives the 3 dbase files (RBF file 1 = structure
                                     RBF file 2 = data
                                     RBF file 3 = index)

dir \reload\
cd\reload
\rbfiles\tools\rbcheck DATABASE NAME (checks that new version is
                                     without errors)
```



### Delete Old Version

Go to database

R>close

R>set mess on

R>erase \*.rbf - NOTE NEVER erase \*.\*

### Reload

Copy \reload

zip \dos\comp \*.rbf \reload\\*.\*

### Backup

(copying files to diskette)

cd\barbados

\dos\backup c:\barbados\\*.\* a:

### Renaming Computed Columns

Change type, i.e. eliminate expression

redefine columnname to text \_\_ (length of characters in expression)

in tablename

list tablename

remove column columnname from tablename

### Note

The rows in the following tables MUST remain:

forms, reports, rules, typeout, typein

Commerce must have one empty row. If it has been deleted, set rules off, enter the row, set rules on.



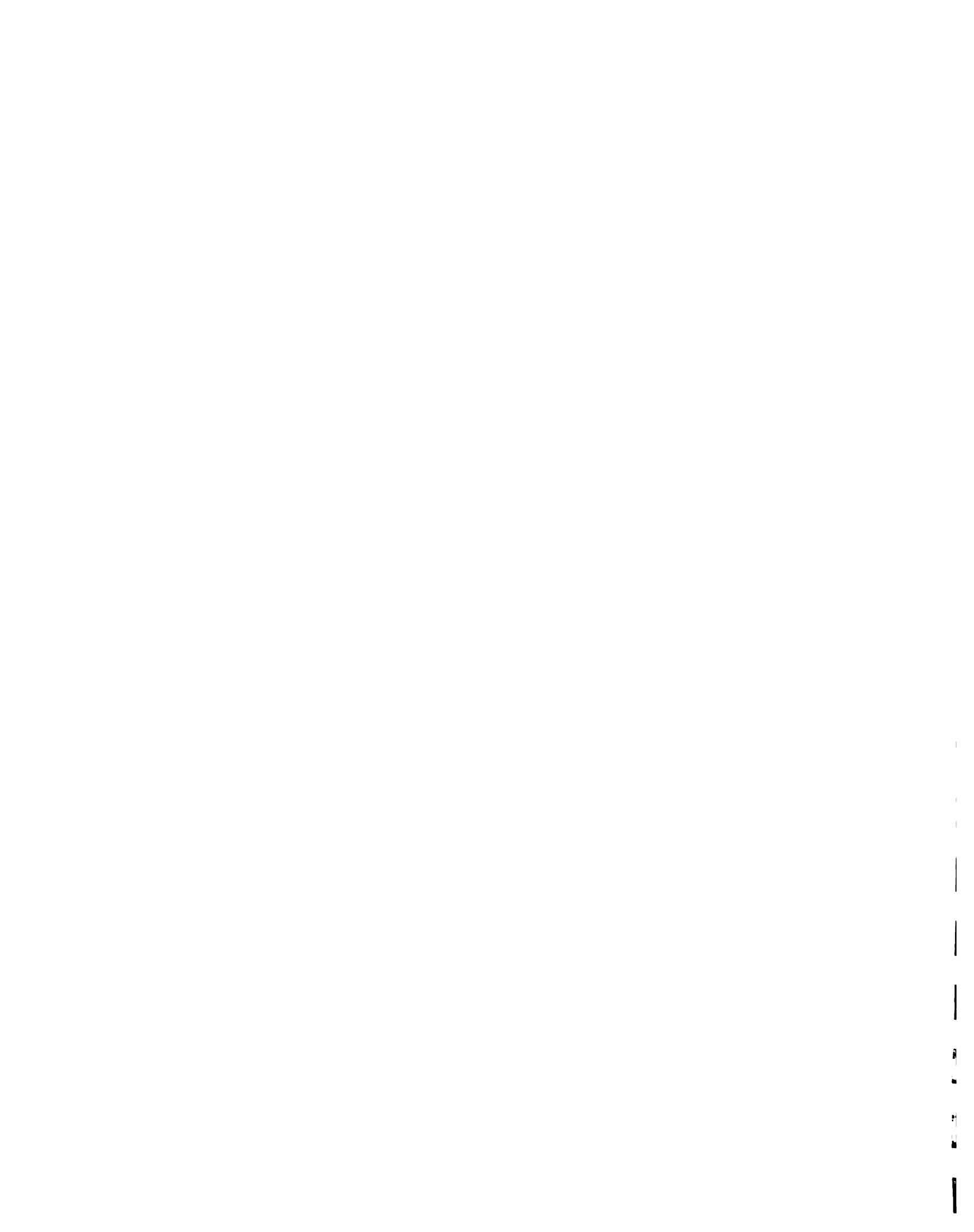
**ANNEXES**





ENTRY AND EDIT OPTIONS

Forms



Selection of Type of Information

- |  |  |
|--|--|
| [1] Registration of Countries  | [12] Land Use, and number, Size and Average of Parcels per Holdings        |
| [2] Registration of Products   | [13] Distribution of Farms by Type of Tenure                               |
| [3] Registration of Countries involved in External Commerce                          | [14] Seasonality of Selected Crops   |
| [4] Population, Employment, Money Supply, Consumer Price Index                       | [15] Agricultural Credits  |
| [5] Composition of GDP by Sector   | [16] Food Imports, Volume and Value of Agricultural Produce Exports        |
| [6] Loans and Advances by Sector, External public Debts and Public Sector Operations | [17] Type of Production: # of Farms, Area, Total Production, Prices        |
| [7] Imports and Exports by Sector  | [18] Agric. Exports by Type of Prod. and Country of Destination            |
| [8] Exports by Sector and Country of Destination                                     | [19] Agric. Imports by Type of Prod. and Country of Origin                 |
| [9] Imports by Sector and Country of Origin  | [20] Animal Population, Distribution of Livestock Farms by Number of Heads |
| [10] Distribution of Farmers by Gender and Age                                       | [21] Animal Products and Slaughter House Capacity                          |
| [11] Land Aptitudes, Slope of Land and Environmental Factors                         | [22] Agro-Processor Firms  |

Type and [Enter] the # of your selection [ ]



LIST OF FORMS

Option Number, Title, and Tables of Entry and Edit Forms

- [1] Registration of Countries  
FCOUNTRY FOUNTRY (tcountry)
- [2] Registration of Products  
FLPROD FEPROD (tproduct)
- [3] Registration of Countries involved in External Commerce  
FLCOM FECOM (comerce)
- [4] Population, Employment, Money Supply, Consumer Price Index  
FLTAB1 FETAB1 (tabla\_1)
- [5] Composition of GDP by Sector  
FLTAB2 FETAB2 (tabla\_2)
- [6] Loan and Advances by Sector, External Public Debt, Public  
Sector Operations  
FLTAB21 FETAB21 (tabla2\_1)
- [7] Imports and Exports by Sector  
FLTAB4 FETAB4 (tabla\_4)
- [8] Exports by Sector and Country of Destination  
FLTAB41 FETAB41 (tabla401 ; tabla\_41)
- [9] Imports by Sector and Country of Origin  
FLTAB42 FETAB42 (tabla402 ; tabla42)
- [10] Distribution of Farmer by Gender and Age  
FLTAB6 FETAB6 (tabla\_6)
- [11] Land Aptitudes, Slope of Land and Environmental Factors  
FLTAB7 FETAB7 (tabla\_7)
- [12] Land Use, and Number, Size and Averages of Parcels per  
Holdings  
FLTAB8 FETAB8 (tabla\_8)
- [13] Distribution of Farms by Type of Tenure  
FLTAB9 FETAB9 (tabla\_9)
- [14] Seasonality of Selected Crops  
FLTAB10 FETAB10 (tabla100 ; tabla\_10)
- [15] Agricultural Credit  
FLTAB91 FETAB91 (tabla9\_1)



LIST OF FORMS  
Titles, Entry and Edit Forms, Table  
(Cont.)

- [16] Food Imports and Volume and Value of Exports of  
Agricultural Produce  
    FLTAB5      FETAB5      (tabla\_5)
- [17] Type of Production.- Number of Farms, Area, Total  
Production and Prices  
    FLTAB3      FETAB3      (tabla\_3)
- [18] Agric. Exports by Type of Production and Country of  
Destination  
    FLTAB15      FETAB15      (tabla15 ; tabla151)
- [19] Agric. Imports by Type of Production and Country of Origin  
    FLTAB16      FETAB16      (tabla16 ; tabla161)
- [20] Animal Population, Distribution of Livestock by Number of  
Heads  
    FLTAB11      FETAB11      (tabla\_11)
- [21] Animal Production and Slaughter House Capacity  
    FLTAB14      FETAB14      (tabla\_14)
- [22] Agro-processor Firms Information  
    FLTAB13      FETAB13      (tabla\_13 ; tabla131 ; tabla132)





Registration of Countries

Add Edit again

REGISTRATION OF COUNTRIES

Name of the country:

Code for this country:

Currency (Symbol):

[Enter] next field, [Esc] TOP MENU



Registration of Product

Add Edit again

REGISTRATION OF PRODUCTS

Name of the Product:

Code for this Product:

[Enter] next field, [Esc] TOP MENU



Registration of Countries involved in External Commerce

Add Edit again

REGISTRATION OF COUNTRIES INVOLVED IN EXTERNAL COMMERCE

Name of the country:

Code for this country:

[Enter] next field, [Esc] TOP MENU



Add Edit again

Country:

Year: 19

POPULATION

Population Total:  
 Percent Urban: %  
 Percent in Capital: %  
 Percent Male: %  
 Percent Female: 100. %  
 Percent Literate: %

Distribution by Age

Group of age	Number of people
0 - 15	
16 - 20	
26 - 30	
36 - 40	
46 - 50	
56 - 60	
Over 60	

(T1) TOTAL 0.

[Enter] next field, [PgDn] next page, [Esc] TOP MENU

Country:

Year: 19

EMPLOYMENT

Total people employed:  
 Total Salaries paid  
 - Current prices:

Unemployment Rates (%)

Age Group	Male	Female	Total
15 - 24			
25 - 34			
35 - 44			
45 - 55			
55 - 65			
Over 65			

TOTAL

[Enter] next field, [PgDn] next page, [PgUp] previous page, [Esc] TOP MENU





Country:

Year: 19

MONEY SUPPLY & INFLATION RATES

Money supply :  
% Change over prev. year:

Consumer Price Index:  
% Annual Inflation:

[Enter] next field, [PgUp] previous page, [Esc] TOP MENU



Composition of GDP by sector

Add Edit again

Country:

Year: 19

COMPOSITION OF GDP BY SECTOR

Continue

SECTORS	CURRENT PRICES	CONSTANT PRICES	%
TOTAL	0.		100.00
Crops			
Livestock			
Fishing			
Forestry			
Minig & Quarrying			
Electricity & Water			
Manufacturing			
Construction			

Price Index:

[Enter] next field, [PgDn] next page, [ESC] TOP MENU

Page 2 of 2

Country:

Year: 19

COMPOSITION OF GDP BY SECTOR

SECTORS	CURRENT PRICES	CONSTANT PRICES	%
TOTAL	0.		100.00
Wholesale & Retail Trade			
Hotel & Restaurants			
Transport & Communication			
Banking & Insurance			
Real Estate & Housing			
Government Services			
Other Services			

Price Index:

[Enter] next field, [PgUp] previous page, [ESC] TOP MENU



Loans and advances by Sector, External Public Debt, Public Sect. Oper.   
 Add Edit again

Country:

Year: 19

DISTRIBUTION OF LOANS AND ADVANCES BY SECTOR (US\$'M )

SECTOR	LOAN/ADVANCE	PERCENTAGE
Agriculture		
Fisheries		
Manufacturing		
Distribution		
Tourism		
Entertainment & Catering		
Transport		
Construction		
Government & Statutory Bodies		
Personal		
Other		
TOTAL	0.	100.00

[Enter] next field, [PgDn] next page, [Esc] TOP MENU

Page 2 of

Country:

Year: 19

SUMMARY OF EXTERNAL PUBLIC DEBT OPERATIONS (US\$'M )

EXCHANGE CURRENCY RATE US\$ 1 =

TOTAL OUTSTANDING DEPT AT  
END OF PERIOD

DEBT SERVICE PAYMENTS 0.

Amortization

Interest

Overdue obligations

Total debt outstanding / GDP

Debt service / GDP

Debt service / Exports

[Enter] next field, [PgDn] next page, [PgUp] previous page, [Esc] TOP MENU



Country:

SUMMARY OPERATIONS OF THE PUBLIC SECTOR

Continue

CONSOLIDATED PUBLIC SECTOR

Current revenue

o.w. budgetary grants

Current expenditure

Current account balance 0.

Capital expenditure

Overall surplus/deficit (-) 0.

Financing 0.

External grants

External (net)

Domestic (net)

Others (net)

[Enter] next field, [PgDn] next page, [PgUp] previous page, [Esc] TOP MENU

Year: 19

Country:

SUMMARY OPERATIONS OF THE PUBLIC SECTOR

Continue

CENTRAL GOVERNMENT

Current revenue

o.w. budgetary grants

Current expenditure

Current account balance 0.

Cap. expenditure & net lending 0.

o.w.: Fixed capital formation

Transfers rest public sector

Overall surplus/deficit (-) 0.

[Enter] next field, [PgDn] next page, [PgUp] previous page, [Esc] TOP MENU





Country:

Year: 19

SUMMARY OPERATIONS OF THE PUBLIC SECTOR

Financing 0.

-----  
External grants

External (net)

Domestic (net)

Others (net)

[Enter] next field, [PgUp] previous page, [ESC] TOP MENU



## Imports and Exports by sector

Add Edit again

Country:

Year: 19

## IMPORTS AND EXPORTS BY SECTOR (US\$'M)

SECTOR	IMPORTS	EXPORTS	BALANCE
Food & live Animals			0.
Beverages & Tobacco			0.
Crude Materials inedible except fuels			0.
Mineral Fuels, lubricants & related materials			0.
Animal & vegetable oils & fats			0.
Chemicals			0.
Manufactured Goods Classified chiefly by material			0.
Machinery & Transport Equipment			0.
Miscellaneous Manufactured Articles			0.
Commodities & transaction not classified according to kind			0.
	TOTAL	0.	0.
		0.	0.

[Enter] next field, [Esc] TOP MENU



Exports by Sector and Country of Destination

Add Edit again

Country:

Year: 19

EXPORTS BY SECTOR AND COUNTRY OF DESTINATION (US\$'M)

CODE	SECTOR	CODE	SECTOR
0	Food & live Animals	6	Manufactured goods classified by material
1	Beverages & Tobacco	7	Machinery and transport equipment
2	Crude Materials inedible except fuels	8	Miscellaneous manufactured articles
3	Mineral foods, lubricants & related materials	9	Commodities & transactions not classified accordind to kind
4	Animal & vegetable oils & fats		
5	Chemicals		

SECTOR CODE      COUNTRY OF DESTINATION      VALUE (US\$'M)

[Enter] next field, [Esc] TOP MENU



Distribution of Farmers by Gender and Age

Add Edit again

Country:

Year: 19

DISTRIBUTION OF FARMERS BY GENDER AND AGE

TOTAL NUMBER OF FARMERS

TOTAL RURAL  
POPULATION O.

SEX No. OF FARMERS %

Male  
Female

AGE GROUP No. OF FARMERS %

< 20  
20 - 30  
31 - 45  
46 - 60  
> 60

[Enter] next field, [Esc] TOP MENU





Land Aptitudes, Slope of Land and Environmental Factors

Add Edit again

Country:

LAND APTITUDE (Acres ; % )		SLOPE OF LAND	
TOTAL LAND AREA	0. 100.00%		
Total Cultivable lands	0.	% of Slope	% of Land
w/o limitations		0 - 5	
moderate limitations		6 - 10	
strong limitations		11 - 20	
Pasture/tree crops		21 - 30	
Permanent tree crops		> 30	
Natural forest			
Non-agricultural			

[Enter] next field, [PgDn] next page, [Esc] TOP MENU

Country:

ENVIRONMENTAL FACTORS					
ALTITUDE (feet)	Highest Point	Lowest Point			
TEMPERATURE (°F)	Average High	Average Low	Mean Annual		
RELATIVE HUMIDITY (%)	Average High	Average Low	Mean Annual		
RAINFALL (inch/year)	Average High	Average Low	Mean Annual	Driest Month	Wettest Month

[Enter] next field, [PgUp] previous page, [Esc] TOP MENU



Land Use, and Number, Size and Averages of Parcels per Holdings

Add Edit again

Country:

Year: 19

LAND USE ( Acres ; % )

CATEGORY	ACREAGE	%
TOTAL LAND AREA		100.00
TOTAL LAND IN AGRIC. USE	0.	
Land under temporary crops		
Land under tree crops		
Grassland-Cultivated		
Grassland-Uncultivated		
Forest/Woodland		
NON-AGRICULTURAL USE		

[Enter] next field, [PgDn] next page, [Esc] TOP MENU

Page 2 of :

Country:

Year: 19

NUMBER, SIZE AND AVERAGE NUMBERS OF PARCELS PER HOLDINGS

SIZE GROUP Acres	HOLDINGS		AREA OCCUPIED		AVERAGE No. OF PARCELS No.	AVERAGE SIZE OF PARCELS Acres
	No.	%	Acres	%		
< 0.5						
.5 - 1.0						
1.0 - 2.0						
2.0 - 5.0						
5.0 - 10.0						
10.0 - 20.0						
20.0 - 30.0						
> 30.0						
TOTAL	0.	100.0	0.	100.0		

AVERAGE HOLDING SIZE

[Enter] next field, [PgUp] previous page, [Esc] TOP MENU



Distributions of Farms by Type of Tenure

Add Edit again

Country:

Year: 19

DISTRIBUTION OF FARMS BY TYPE OF TENURE

	No.	%	ACREAGE	%
Owned by individuals				
Owned by families				
Part owned and part rented				
Managed for others				
Rented/Leased				
Share Cropped				
'Landless' Farmers				
Other				
TOTAL	0.	100.0	0.	100.0
TOTAL LAND AREA				

[Enter] next field, [Esc] TOP MENU



Seasonality of Selected Crops

Add Edit again

Country:

SEASONALITY OF SELECTED CROPS

PRODUCT	SEASON NUMBER	RANGE OF SEASON		
		FIRST MONTH	LAST MONTH	PEAK MONTH

[Enter] next field, [Esc] TOP MENU





Agricultural Credit

Add Edit again

Country:

Year: 19

DISTRIBUTION OF AGRICULTURAL CREDIT

PRODUCTION	NUMBER OF CREDIT		VALUE	
	APPROVED	DISBURSED	APPROVED	DISBURSED
Food Crops				
Export Crops				
Vegetables				
Livestock	0.	0.	0.	0.
Sheep				
Goats				
Cattle				
Chicken				
Pigs				
TOTAL	0.	0.	0.	0.

[Enter] next field, [Esc] TOP MENU



Food Imports and Volume and Value of Agricultural Produce Exports

Add Edit again

Country:

Year: 19

FOOD IMPORTS (US\$'M)

TOTAL IMPORTS

TOTAL FOOD IMPORTS 0.  
 Meat and meat products  
     Eggs and dairy  
     Fish and crust.  
 Cereals & preparations  
     Vegetables  
     Fruits  
     Sugar  
 Coffee, cocoa, species  
 Feed stuff for animals  
     Edible oils  
     Other foods

[Enter] next field, [PgDn] next page, [Esc] TOP MENU

Page 2 of 2  
 Year: 19

Country:

VOLUME AND VALUE OF EXPORTS OF AGRICULTURAL PRODUCE

DESTINATION	COMMODITY	(Tons.)	%	(US\$'M)	%
EXTRA-REGIONAL	Fruits				
	Vegetables				
	Root-crops				
	Ornamentals				
	Others				
	SUBTOTAL	0.			0.
REGIONAL	Fruits				
	Vegetables				
	Root-crops				
	Ornamentals				
	Others				
	SUBTOTAL	0.			0.
	TOTAL	0.	100.00	0.	100.00

[Enter] next field, [PgUp] previous page, [Esc] TOP MENU



Type of Production.-Number of farms, Area, Total Production and Prices  
Add Edit again

Country:

Year: 19

Type of Production:

NUMBER OF FARMS, TOTAL PRODUCTION, AREA AND PRICES

No. of Farms:  
Total Production (Tons.):  
Annual Consumption (Tons.):  
Daily Intake (Kg/Person/Day):

AREA (Acres)  
Total Area:  
Stand Alone Area:

PRICE PAID FOR THIS PRODUCT (/Ton)  
Farmgate:  
Retail:  
Wholesale:

[Enter] next field, [ESC] TOP MENU









Agric. Imports by Type of Production and Country of Origin

Add Edit again

Country:

Year: 19

Type of Production:

IMPORTS BY COUNTRY OF ORIGIN

COUNTRY OF ORIGIN

VOLUME  
(Tons.)

VALUE  
(US\$'000)

[Enter] next field, [Esc] TOP MENU



Animal Population, Distribution of Livestock Farms by Number of Heads  
 Add Edit again

Country:

Year: 19

ANIMAL POPULATION   Continue

CATEGORIES	NUMBER	CATEGORIES	NUMBER
SWINE	0.	BEEF CATTLE	0.
Sows		Breeding Cows	
Boars		Heifers 2-3 years old	
Piglets		Heifers 1-2 years old	
		Calves < 1 year old	
POULTRY	0.		
Layers		Bulls > 3 years old	
Broilers		Bulls > 2 years old	
		Bulls > 1 year old	
		Steers	

[Enter] next field, [PgDn] next page, [Esc] TOP MENU

Page 2 of 3

Country:

Year: 19

ANIMAL POPULATION  

CATEGORIES	NUMBER	CATEGORIES	NUMBER
DAIRY HERD	0.	SHEEP & GOAT	0.
Breeding Cows		Sheep	
Heifers 2-3 years old		Goat	
Heifers 1-2 years old			
Calves < 1 year old			
Bulls > 3 years old			
Bulls > 2 years old			
Bulls > 1 year old			
Steers			

[Enter] next field, [PgUp] previous page, [PgDn] next page, [Esc] TOP MENU



Country:

year: 19

## DISTRIBUTION OF LIVESTOCK FARMS BY NUMBER OF HEAD

HEADS	----- Number of Farms -----				
	Cattle	Sh./Goats	Swine	Poultry	Others
1 - 4					
5 - 9					
10 - 14					
15 - 19					
20 - 24					
> 25					
TOTAL	0.	0.	0.	0.	0.

[Enter] next field, [PgUp] previous page, [Esc] TOP MENU



Animal Products and Slaughter House Capacity

Add Edit again

Country:

Year: 19

MILK PROCESSING CAPACITY			SLAUGHTER HOUSE CAPACITY		
PRODUCT	TOTAL ( '000 lbs)	IN USE (%)	SPECIES	TOTAL (Heads/day)	IN USE (%)
MILK	0.		Cattle		
Fresh			Pigs		
Evaporated			Sheep/Goats		
Condensed			Poultry		
Skimmed			Other		
CHEESE			TOTAL	0.	0.
YOGURT					
ICE CREAM					
OTHER					

[Enter] next field, [PgDn] next page, [Esc] TOP MENU

Country:

Year: 19

MEAT PRODUCTION		MILK PRODUCTION		PRODUCTION OF MILK BY-PRODUCTS	
SPECIES	TOTAL (Tons.)	SOURCE	TOTAL (Tons.)	ITEMS	TOTAL (Tons.)
Cattle		Cattle		MILK	0.
Sheep		Goats		Fresh	
Goats		Others		Evaporated	
Poultry		TOTAL	0.	Condensed	
Pigs				Skimmed	
Others				Full Cream Dried	
TOTAL	0.			CHEESE	
				ICE CREAM	
				OTHERS	

[Enter] next field, [PgUp] previous page, [Esc] TOP MENU





Agro-processor Firms Information

Add Edit again Quit

Country:

AGRO-PROCESSORS FIRMS INFORMATION

Name of Firm:

Year Activities Initiated:  
Number Full-Time Employees:  
Number Part-Time Workers:

RAW MATERIAL USED

OUTPUTS OBTAINED

TYPE                    QUANTITY    UNIT

TYPE                    QUANTITY    UNIT

[Enter] next field, [F9] next region, [Esc] TOP MENU



**OUTPUT OPTIONS**

**Reports**



Selection of Type of Report

- |   |  |
|---|--|
| [1] Composition of GDP Sector   | [14] Exports of Traditional Commodities by Country of Dest.  |
| [2] Unemployment by Age Group and Gender  | [15] Imports of Traditional Commodities by Country of Origin |
| [3] Balance of Visible Trade  | [16] Seasonality of Commodities                              |
| [4] Estimated Openness of Economy   | [17] Production of Milk and Related                          |
| [5] Distribution of Loans and Advances by Sectors   | [18] Distribution of Animal Population                       |
| [6] External Public Debt Operation  | [19] Number of Animals Slaughtered                           |
| [7] Operation of the Public Sector  | [20] Annual Livestock Numbers                                |
| [8] Land Use  |  |
| [9] Distribution of Farms by Type of Tenure   |  |
| [10] Distribution of Farms by Type of Production  |  |
| [11] Distribution of Farmers by Age   |  |
| [12] Distribution of Farmers by Sex   |  |
| [13] Production, Area, Yields, Exports, Imports, Prices and Apparent Consumption and Daily Intake of Food Crops |  |

Type and [Enter] the # of your selection [ ]



LIST OF REPORTS  
Option Number, Title, Name and Table of Outputs

- [1] Composition of GDP Sector  
R:TAB2 (tabla\_2)
- [2] Unemployment by Age Group and Gender  
R:TAB1 (tabla\_1)
- [3] Balance of Visible Trade  
R:TAB4 (tabla\_4)
- [4] Estimated Openness of Economy  
R:TAB4B (tabla\_4)
- [5] Distribution of Loans and Advances by Sectors  
R:TAB2\_1 (tabla2\_1)
- [6] Summary of External Public Debt Operations  
R:TAB21B (tabla2\_1)
- [7] Summary of Operation of the Public Sector  
R:TAB21C (tabla2\_1)
- [8] Land Use  
R:TAB8 (tabla\_8)
- [9] Distribution of Farms by Type of Tenure  
R:TAB9 (tabla\_9)
- [10] Distribution of Farms by Type of Production  
R:TAB3 (tabla\_3)
- [11] Distribution of Farmers by Age  
R:TAB6 (tabla\_6)
- [12] Distribution of Farmers by Sex  
R:TAB6B (tabla\_6)
- [13] Production, Area, Yields, Exports, Imports, Prices and  
Apparent Consumption and Daily Intake of Food Crops  
R:CUADRO (provi3 from tabla3 + tabla 151 + tabla161)
- [14] Exports of Traditional Commodities by Country of Destination  
R:TAB151 (tabla151)
- [15] Imports of Traditional Commodities by Country of Origin  
R:TAB161 (tabla161)
- [16] Seasonality of Commodities  
R:TAB10 (tabla\_10)





LIST OF REPORTS  
Option Number, Title, Name and Table of Outputs  
(Cont.)

[17] Production of Milk and Related  
R:TAB14C (tabla\_14)

[18] Distribution of Animal Population  
R:TAB11 (tabla\_11)

[19] Number of Animals Slaughtered  
R:TAB14B (tabla\_14)

[20] Annual Livestock Numbers  
R:TAB14 (tabla\_14)



COMPOSITION OF GDP BY SECTOR  
Current and Constant prices  
(BDS\$'M)

Country: Barbados

Year: 1980

SECTORS	CURRENT PRICES	CONSTANT PRICES	%
Crops	123.60	5.37	48.93
Livestock	37.00	0.04	14.65
Fishing	1.00	0.04	0.40
Forestry	1.00	0.04	0.40
Mining & Quarrying	1.00	0.04	0.40
Electricity & Water	1.00	0.04	0.40
Manufacturing	1.00	0.04	0.40
Construction	1.00	0.04	0.40
Wholesale & Retail Trade	45.00	1.96	17.81
Hotel & Restaurants	1.00	0.04	0.40
Transport & Communication	36.00	1.57	14.25
Banking & Insurance	1.00	0.04	0.40
Real Estate & Housing	1.00	0.04	0.40
Government Services	1.00	0.04	0.40
Other Services	1.00	0.04	0.40
<b>TOTAL</b>	<b>252.60</b>	<b>10.98</b>	<b>100.00</b>



UNEMPLOYMENT BY AGE GROUP AND GENDER

Country: grenada

Year: 1985

AGE GROUP (Years)	UNEMPLOYMENT RATE %		
	MALE	FEMALE	TOTAL
15 - 24	1.00	2.00	3.00
25 - 34	5.00	6.00	6.00
35 - 44	7.00	9.00	8.00
45 - 54	7.00	9.00	12.00
55 - 64	14.00	23.00	20.00
Over 65			
TOTAL	12.00	16.00	15.00



BALANCE OF VISIBLE TRADE  
(US\$ M)

Country: Barbados

YEAR	EXPORTS	IMPORTS	BALANCE
1980	33.00	33.00	0.00
1981	666.00	666.00	0.00
1982	14.00	127.00	-113.00
1990	0.00	0.00	0.00
1995	78.40	0.00	78.40
1998	0.00	0.00	0.00
TOTAL	791.40	826.00	-34.60





ESTIMATED OPENNESS OF THE ECONOMY

Country: Barbados

YEAR	[a] IMPORTS (US\$ M)	[b] EXPORTS (US\$ M)	[c] [a]+[b] (US\$ M)	EXCHANGE US\$ RATE (BDS\$) †	[d] GDP (US\$ M)	ESTIMATED OPENNESS OF ECONOMY [c]/[d]
1980	33.00	33.00	66.00	2.00	126.30	0.523
1981	666.00	666.00	1332.00			
1982	127.00	14.00	141.00			
1990	0.00	0.00	0.00			
1995	0.00	78.40	78.40			
1998	0.00	0.00	0.00			
TOTAL	826.00	791.40	1617.40		126.30	12.806

(†) Exchange rate used to convert GDP to US\$



**DISTRIBUTION OF LOANS AND ADVANCES BY SECTORS**  
(US\$ 'M)

Country: Barbados

YEAR	ENTERTAINMENT & CATERING					GOVERNMENT & STAT. BODIES			TOTAL
	AGRICULTURE	FISHERIES	MANUFACTURING	DISTRIBUTION	TOURISM	TRANSPORT	CONSTRUCTION	OTHER	
1980	12.00	2.00	1.00	0.50	34.00	1.00	0.00	20.00	70.50
(7)	17.02	2.84	1.42	0.71	48.23	1.42	0.00	28.37	100.00
TOTAL	12.00	2.00	1.00	0.50	34.00	1.00	0.00	20.00	70.50



SUMMARY OF EXTERNAL PUBLIC DEBT OPERATIONS

Country: grenada

Year: 1985

TOTAL OUTSTANDING DEBT AT END OF PERIOD (US\$'M)	49.62
DEBT SERVICE PAYMENTS (US\$'M)	10.47
Amortization (US\$'M)	6.49
Interest (US\$'M)	1.07
Overdue Obligations (US\$'M)	2.90
Total debt outstanding % GDP	51.80
Debt service % GDP	10.93
Debt service % Exports	17.35



SUMMARY OPERATIONS OF THE PUBLIC SECTOR  
(EC\$'M)

Country: grenada

Year: 1985

**I. CONSOLIDATED PUBLIC SECTOR**

Current revenue	128.50
o.w. budgetary grants	19.50
Current expenditure	99.40
 Current account balance	 29.10
-----	
 Capital expenditure	 83.10
 Overall surplus/deficit (-)	 -54.00
-----	
 Financing	 54.00
-----	
External grants	61.60
External (net)	-5.90
Domestic (net)	-5.40
Others (net)	3.70

**II. CENTRAL GOVERNMENT**

Current revenue	119.90
o.w. budgetary grants	19.50
Current expenditure	98.60
 Current account balance	 21.30
-----	
 Cap. expenditure & net lending	 80.00
o.w.: Fixed capital formation	72.60
Transfer rest public sector	7.40
 Overall surplus/deficit (-)	 -58.70
-----	
 Financing	
-----	
External grants	61.60
External (net)	-5.90
Domestic (net)	3.00
Others (net)	0.00





LAND USE

Country: Barbados

Year: 1998

CATEGORY	AREA (Acres)	% OF AREA
TOTAL LAND AREA	25000.0	100.00
TOTAL LAND IN AGRIC. USE	22826.0	91.30
Land under temporary crops	23.0	0.09
Land under tree crops	45.0	0.18
Grassland-Cultivated	67.0	89.38
Grassland-Uncultivated	22346.0	89.38
Forest/Woodland	345.0	1.38
NON-AGRICULTURAL USE	1267.0	5.07



DISTRIBUTION OF FARMS BY TYPE OF TENURE

Country: grenada

Year: 1988

TYPE OF TENURE	NUMBER OF FARMS	% OF FARMS	AREA (Acres)	% OF AREA
Owned by individuals	11.0	0.82	20000.0	74.65
Owned by families	34.0	2.52	456.0	1.70
Part owned and part rented	45.0	3.34	1245.0	4.65
Managed for others	12.0	0.89	124.0	0.46
Rented/Leased	34.0	2.52	578.0	2.16
Share Cropped		0.00		0.00
'Landless' Farmers	1200.0	89.02	3500.0	13.06
Other	12.0	0.89	890.0	3.32
TOTAL	1348.0	100.00	26793.0	100.00



DISTRIBUTION OF FARMS BY TYPES OF PRODUCTION

Country: grenada

Year: 1980

TYPE OF PRODUCTION	NUMBER OF FARMS	% OF FARMS
Banana	13.0	26.00
Tomato	12.0	24.00
Orange	11.0	22.00
Lettuce	14.0	28.00
TOTAL	50.0	100.00



DISTRIBUTION OF FARMERS BY AGE

Country: grenada

Year: 1985

AGE GROUP	NUMBER OF FARMERS	%
< 20	100.0	7.97
21 - 30	200.0	15.95
31 - 45	500.0	39.87
46 - 60	300.0	23.92
> 60	154.0	12.28
TOTAL	1254.0	100.00





DISTRIBUTION OF FARMERS BY SEX

Country: Barbados

YEAR	MALE		FEMALE		TOTAL
	NUMBER	%	NUMBER	%	
1980	23.0	33.82	45.0	66.18	68.0
1990	12.0	21.05	45.0	78.95	57.0



PRODUCTION, EXPORTS, IMPORTS, PRICES AND ESTIMATED CONSUMPTION OF FOOD CROPS

Country: Grenada

YEARS AND CROPS	PRODUCTION (Tons.)	TOTAL AREA (Acres)	YIELD (Tons/Acre)	E X P O R T S		I M P O R T S		P R I C E S		ANNUAL APPARENT CONSUMPTION (Tons.)	APPARENT DAILY INTAKE (Kg.Person/Day)
				Volume (Tons.)	Value (US\$000)	Volume (Tons.)	Value (US\$000)	Wholesale (EC\$/Ton)	Consumer (EC\$/Ton)		
1980											
Banana	140.00			0.00	0.00	0.00	0.00	33.00	23.00	13.00	140.0
Tomato	12.00			0.00	0.00	0.00	0.00	12.00	12.00	12.00	12.0
Orange	11.00	11.00	1.00	0.00	0.00	0.00	0.00	11.00	11.00	11.00	11.0
Lettuce	14.00	14.00	1.00	0.00	0.00	0.00	0.00	14.00	14.00	14.00	14.0
SUBTOTAL 1980		25.00		0.00	0.00	0.00	0.00				
1981											
Levon	12.00	12.00	1.00	4.00	0.40	0.00	0.00	12.00	12.00	12.00	8.0
Lettuce	11.00	11.00	1.00	0.00	0.00	0.00	0.00	11.00	11.00	11.00	11.0
SUBTOTAL 1981		23.00			0.40		0.00				
1984											
Levon				27.00	3.30	0.00	0.00				-27.0
SUBTOTAL 1984		0.00			3.30		0.00				



## EXPORTS OF TRADITIONAL COMMODITIES BY COUNTRY OF DESTINATION

Country: GRENADA

YEAR DESTINATION COUNTRY AND COMMODITIES	VOLUME (Tons.)	VALUE (US\$'000)
1981		
UNITED KINGDOM Lemon	2.0	0.2
UNITED STATES Lemon	2.0	0.2
1984		
UNITED KINGDOM Lemon	12.0	1.0
CANADA Lemon	2.0	0.1
UNITED STATES Lemon	1.0	1.0
OTHERS Lemon	12.0	1.2



## IMPORTS OF TRADITIONAL COMMODITIES BY COUNTRY OF ORIGIN

Country: BARBADOS

YEAR COUNTRY OF ORIGIN AND COMMODITIES	VOLUME (Tons.)	VALUE (US\$'000)
1980		
UNITED KINGDOM		
Lemon	12.0	34.0
Orange	1.5	0.1
CANADA		
Orange	12.0	1.2
UNITED STATES		
Orange	11.0	1.5
OTHERS		
Orange	23.0	2.4
1981		
UNITED KINGDOM		
Lemon	1.0	23.0
OTHERS		
Lemon	0.3	12.0
1983		
OTHERS		
Lemon	12.0	1.0





SEASONALITY OF SOME COMMODITIES

Country: SAINT LUCIA

COMMODITIES	SEASON	PEAK MONTH
Lemon	(1.) May - Jun	Jun
	(2.) May - Jun	Jun
Orange	(1.) May - Jun	Jun







## ANIMAL POPULATION

Country: grenada

Year: 1985

CATEGORIES	NUMBER OF HEADS
SWINE	4500.0
Sows	1200.0
Boars	300.0
Piglets	3000.0
POULTRY	3800.0
Layers	2800.0
Broilers	1000.0
BEEF CATTLE	2640.0
Breeding Cows	1000.0
Heifers 2-3 years old	100.0
Heifers 1-2 years old	200.0
Calves > 1 year old	300.0
Bulls > 3 years old	120.0
Bulls > 2 years old	300.0
Bulls > 1 year old	500.0
Steers	120.0
DAIRY HERD	123.0
Breeding Cows	123.0
Heifers 2-3 years old	
Heifers 1-2 years old	
Calves > 1 year old	
Bulls > 3 years old	
Bulls > 2 years old	
Bulls > 1 year old	
Steers	
SHEEP AND GOATS	3500.0
Sheep	1200.0
Goat	2300.0

Handwritten text, likely bleed-through from the reverse side of the page. The characters are vertically oriented and appear to be in a cursive or semi-cursive style.

**ANIMALS SLAUGHTERED**  
**(Number of Heads)**

**Country: Barbados**

<b>YEAR</b>	<b>CATTLE</b>	<b>SHEEP &amp; GOATS</b>	<b>PIGS</b>	<b>POULTRY</b>	<b>OTHERS</b>
<b>1985</b>					





ANNUAL LIVESTOCK NUMBERS  
(Number of Heads)

Country: Barbados

YEAR	CATTLE	SHEEP/GOATS	SWINE	POULTRY	OTHERS
1980					
1982	0.0	0.0	0.0	0.0	0.0
1987	1.0	2.0	3.0	4.0	3.0



**TABLES AND COLUMNS**

**Names, Characteristics  
and Content**



TABLES	COLUMNS					
	#	NAME	TYPE	LENGTH	KEY	DESCRIPTION
TCOUNTRY	NAME AND CODE OF COUNTRIES OF THIS DATABASE					
	1	CCOUNTRY	TEXT	1	yes	Country Code
	2	NCOUNTRY	TEXT	15	yes	Name of Country
	3	money	TEXT	8		Currency of country - short form
	4	money_t	TEXT	12		currency of country (Thousand form)
	5	money_m	TEXT	10		Currency of Country (Million form)
TPRODUCT	NAME AND CODE OF PRODUCTS INVOLVED IN THIS DATABASE					
	1	NPRODUCT	TEXT	15	yes	Name of Product
	2	CPRODUCT	TEXT	2	yes	Product Code
COMERCE	NAME AND CODE OF COUNTRIES INVOLVED IN EXTERNAL TRADE					
	1	ccommerce	TEXT	2	yes	country code
	2	ncountry	TEXT	15	yes	Name of this country involved in external commerce
TABLA_1	POPULATION, EMPLOYMENT, MONEY SUPPLY, CONSUMER PRICE INDEX					
	1	ccountry	TEXT	1	yes	Country code
	2	year	TEXT	2	yes	Year
	3	cod_c_y	TEXT	3	yes	Country-Year Code ( = ccountry + year ; exp.form)
	4	popultot	REAL			Total Population
	5	populurb	REAL			Percent Urban Population (exp. form)
	6	populcap	REAL			Percent Population in Capital
	7	populmal	REAL			Percent Population Male
	8	populfem	REAL			Percent Population Female ( = 100 - populmal ; exp.form)
	9	popullit	REAL			Percent Population Literate
	10	popuage1	REAL			Number of People: 0 - 15 years old
	11	popuage2	REAL			Number of People: 16 - 20 years old
	12	popuage3	REAL			Number of People: 26 - 30 years old
	13	popuage4	REAL			Number of People: 36 - 40 years old
	14	popuage5	REAL			Number of People: 46 - 50 years old
	15	popuage6	REAL			Number of People: 56 - 60 years old
	16	popuage7	REAL			Number of People: Over 60 years old
	17	popuage	REAL			Total number of People by Age ( = popuage1 + popuage2 ..... + popuage7 ; exp.fo
	18	unemmal1	REAL			Male unemployment rate, Age group: 15 - 24
	19	unemfem1	REAL			Female unemployment rate, Age group: 15 - 24
	20	unemt01	REAL			Total unemployment rate, Age group: 15 - 24
	21	unemmal2	REAL			Male unemployment rate, Age group: 25 - 34
	22	unemfem2	REAL			Female unemployment rate, Age group: 25 - 34
	23	unemt02	REAL			Total unemployment rate, Age group: 25 - 34
	24	unemmal3	REAL			Male unemployment rate, Age group: 35 - 44
	25	unemfem3	REAL			Female unemployment rate, Age group: 35 - 44
	26	unemt03	REAL			Total unemployment rate, Age group: 35 - 44
27	unemmal4	REAL			Male unemployment rate, Age group: 45 - 55	



TABLES	COLUMNS				
	#	NAME	TYPE	LENGTH	KEY DESCRIPTION
	28	unenfem4	REAL		Female unemployment rate, Age group: 45 - 55
	29	unemt04	REAL		Total unemployment rate, Age group: 45 - 55
	30	unemmal5	REAL		Male unemployment rate, Age group: 55 - 65
	31	unenfem5	REAL		Female unemployment rate, Age group: 55 - 65
	32	unemt05	REAL		Total unemployment rate, Age group: 55 - 65
	33	unemmal6	REAL		Male unemployment rate, Age group: Over 65
	34	unenfem6	REAL		Female unemployment rate, Age group: Over 65
	35	unemt06	REAL		Total unemployment rate, Age group: Over 65
	36	unemmal	REAL		Total Male unemployment rate ( = unemmal1 + unemmal2 + ..... unemmal6 ; exp.fo
	37	unenfem	REAL		Total Female unemployment rate ( = unenfem1 + unenfem2 + ..... unenfem6 ; exp.f
	38	unemt0t	REAL		Total unemployment rate ( = unemt0t1 + unemt0t2 + ..... unemt0t6 ; exp.fo
	39	empltot	REAL		Total People Employed
	40	salartot	REAL		Total Salaries Paid
	41	moneytot	REAL		Total Money Supply
	42	moneycha	REAL		Total Money Supply percent change over previous year
	43	priceind	REAL		Annual Consumer Price Index
	44	pricecha	REAL		Annual Percent of Inflation
TABLA_2	COMPOSITION OF GDP BY SECTOR				
	1	ccountry	TEXT	1	yes Country Code
	2	year	TEXT	2	yes Year
	3	cod_c_y	TEXT	3	yes Country-Year Code ( = ccountry + year ; exp.fo
	4	TOTcur	REAL		Total Current Prices ( exp.fo
	5	TOTcon	REAL		Total Constant Prices
	6	cropcur	REAL		Crops in GDP current prices
	7	livcur	REAL		Livestock in GDP current prices
	8	Fiscur	REAL		Fishing in GDP current prices
	9	forcur	REAL		Forestry in GDP current prices
	10	m&qcur	REAL		Mining & Quarrying in GDP current prices
	11	e&wcur	REAL		Electricity & Water in GDP current prices
	12	mancur	REAL		Manufacturing in GDP current prices
	13	concur	REAL		Construction in GDP current prices
	14	w&rcur	REAL		Wholesale & Retail Trade in GDP current prices
	15	h&rcur	REAL		Hotel & Restaurants in GDP current prices
	16	t&ccur	REAL		Transport & Communication in GDP current prices
	17	b&icur	REAL		Banking & Insurance in GDP current prices
	18	r&hcur	REAL		Real Estate & Housing in GDP current prices
	19	Govcur	REAL		Government Services in GDP current prices
	20	othcur	REAL		Other Services in GDP current prices
TABLA2_1	LOANS AND ADVANCES BY SECTOR, EXTERNAL PUBLIC DEBT, PUBLIC SECTOR OPERATIONS				
	1	ccountry	TEXT	1	yes Country code
	2	year	TEXT	2	yes Year
	3	cod_c_y	TEXT	3	yes Country-Year code ( = ccountry + year ; exp.fo
	4	agrila	REAL		Loans and Advances: Agriculture
	5	fisla	REAL		Loans and Advances: Fisheries





TABLES	COLUMNS					
	#	NAME	TYPE	LENGTH	KEY	DESCRIPTION
	6	manla	REAL			Loans and Advances: Manufacturing
	7	disla	REAL			Loans and Advances: Distribution
	8	toula	REAL			Loans and Advances: Tourism
	9	e&cla	REAL			Loans and Advances: Entertainment & Catering
	10	trala	REAL			Loans and Advances: Transport
	11	conla	REAL			Loans and Advances: Construction
	12	g&sla	REAL			Loans and Advances: Government & Statutory Bodies
	13	perla	REAL			Loans and Advances: Personal
	14	othla	REAL			Loans and Advances: Other
	15	TOT1a	REAL			Loans and Advances Total ( exp.form )
	16	exchrata	REAL			External Public Debt: Exchange national currency rate for US\$ 1
	17	TOTdeb	REAL			External Public Debt: Total Outstanding Debt at End of Period
	18	TSPdeb	REAL			External Public Debt: Total Debt Service Payments ( exp.form )
	19	amodeb	REAL			External Public Debt: Amortization Debt Payments
	20	intdeb	REAL			External Public Debt: Interest Debt Payments
	21	ovedeb	REAL			External Public Debt: Overdue Obligations Debt Payments
	22	revcon	REAL			Oper.Public Sector-Cons.Pub.Sector-Current Revenue
	23	owcon	REAL			Oper.Public Sector-Cons.Pub.Sector-O.w Budgetary Grants
	24	expcon	REAL			Oper.Public Sector-Cons.Pub.Sector-Current Expenditure
	25	accbcon	REAL			Oper.Public Sector-Cons.Pub.Sector-Current Account Balance ( FLtab21: accbcon -
	26	capcon	REAL			Oper.Public Sector-Cons.Pub.Sector-Capital Expenditure
	27	ovecon	REAL			Oper.Public Sector-Cons.Pub.Sector-Overall Surplus Deficit ( exp.form )
	28	TOTfin	REAL			Oper.Public Sector-Cons.Pub.Sector-Financing ( exp.form )
	29	extgcon	REAL			Oper.Public Sector-Cons.Pub.Sector-External Grants
	30	extncon	REAL			Oper.Public Sector-Cons.Pub.Sector-External (net)
	31	domcon	REAL			Oper.Public Sector-Cons.Pub.Sector-Domestic (net)
	32	othcon	REAL			Oper.Public Sector-Cons.Pub.Sector-Others (net)
	33	revcen	REAL			Oper.Public Sector-Central Gov.-Current Revenue
	34	owcen	REAL			Oper.Public Sector-Central Gov.-O.w Budgetary Grants
	35	expcen	REAL			Oper.Public Sector-Central Gov.-Current Expenditure
	36	accbcen	REAL			Oper.Public Sector-Central Gov.-Current Account Balance ( exp.form )
	37	capcen	REAL			Oper.Public Sector-Central Gov.-Capital Expenditure & Net Lending ( exp.form )
	38	owfcen	REAL			Oper.Public Sector-Central Gov.-O.w: Fixed Capital Formation
	39	tracen	REAL			Oper.Public Sector-Central Gov.-Transfers Rest Public Sector
	40	ovecen	REAL			Oper.Public Sector-Central Gov.-Overall Surplus/Deficit
	41	TOTfince	REAL			Oper.Public Sector-Central Gov.-Financing (exp.form)
	42	extgcen	REAL			Oper.Public Sector-Central Gov.-External Grants
	43	extncen	REAL			Oper.Public Sector-Central Gov.-External (net)
	44	domcen	REAL			Oper.Public Sector-Central Gov.-Domestic (net)
	45	othcen	REAL			Oper.Public Sector-Central Gov.-Others (net)
TABLA_4	IMPORTS AND EXPORTS BY GDP SECTORS					
	1	ccountry	TEXT	1	yes	Country code
	2	year	TEXT	2	yes	Year
	3	cod_c_y	TEXT	3	yes	Country-Year code ( = ccountry + year ; exp.form )
	4	fooin	REAL			Imports: Food & Live Animals
	5	foorex	REAL			Exports: Food & live Animals
	6	bevin	REAL			Imports: Beverages & Tobacco



TABLES	COLUMNS				
	#	NAME	TYPE	LENGTH	KEY DESCRIPTION
	7	bevex	REAL		Exports: Beverages & Tobacco
	8	cruin	REAL		Imports: Crude Materials inedible, except fuels
	9	cruex	REAL		Exports: rude Materials inedible, except fuels
	10	minin	REAL		Imports: Mineral fuels, lubricants & Related materials
	11	minex	REAL		Exports: mineral fuels, lubricants & Related materials
	12	aniin	REAL		Imports: Animal & Vegetables oils & Fats
	13	aniex	REAL		Exports: Animal & Vegetables oils & Fats
	14	chein	REAL		Imports: Chemicals
	15	cheex	REAL		Exports: Chemicals
	16	manin	REAL		Imports: Manufactured Goods classified by materials
	17	manex	REAL		Exports: Manufactured Goods calssified by materials
	18	macin	REAL		Imports: Machinery & Transport Equipment
	19	macex	REAL		Exports: Machinery & Transport Equipment
	20	misin	REAL		Imports: Miscellaneous manufactured Articles
	21	misex	REAL		Exports: Miscellaneous manufactured Articles
	22	comin	REAL		Imports: Imports: Commodities & Transactions not
	23	comex	REAL		Exports: Commodities & Transaction not classified
	24	TOTin	REAL		Total Imports ( exp.form )
	25	TOTex	REAL		Total Exports ( exp.form )
TABLA401	EXPORTS BY SECTOR AND COUNTRY OF DESTINATION - (ROOT)				
	1	ccountry	TEXT	1	yes Exports Country code
	2	year	TEXT	2	yes Year
	3	cod_401	TEXT	3	yes Country-Year Code (exp.form)
TABLA_41	EXPORTS BY SECTOR AND COUNTRY OF DESTINATION - (DATA)				
	1	cod_401	TEXT	3	yes Exports by Sector, Country code (exp.form)
	2	crubro	TEXT	1	yes Sector code
	3	ncountry	TEXT	15	Name of Country of Destination
	4	ccomerce	TEXT	2	Destination Country code
	5	cod_T41	TEXT	6	yes Country-Product-Destination Country Code (exp.form)
	6	TradeUS\$	REAL		Value of Exports
TABLA402	IMPORTS BY SECTOR AND COUNTRY OF ORIGIN - (ROOT)				
	1	ccountry	TEXT	1	yes Imports Country Code
	2	year	TEXT	2	yes Year
	3	cod_402	TEXT	3	yes Country-Year Code (exp.form)
TABLA_42	IMPORTS BY SECTOR AND COUNTRY OF ORIGIN - (DATA)				
	1	cod_402	TEXT	3	yes Imports by Sector, Country Code (exp.form)
	2	crubro	TEXT	1	yes Sector code
	3	ncountry	TEXT	15	Name of Country of Origin



TABLES	COLUMNS				
	#	NAME	TYPE	LENGTH	KEY DESCRIPTION
	4	ccomerce	TEXT	2	yes Origin Country code
	5	cod_t42	TEXT	6	Country-Product-Origin Country Code (exp.form)
	6	TradeUS\$	REAL		Value of Imports
TABLA_6	DISTRIBUTION OF FARMER BY GENDER AND AGE				
	1	ccountry	TEXT	1	yes Country Code
	2	year	TEXT	2	yes Year
	3	cod_c_y	TEXT	3	yes Country-Year Code (exp.form)
	4	male	REAL		Number of Farmers: Male
	5	female	REAL		Number of Farmers: Female
	6	TOTfar	REAL		Total Number of Farmers
	7	F<20	REAL		Number of Farmers: < 20 years old
	8	F20-30	REAL		Number of Farmers: 20 - 30 years old
	9	F31-45	REAL		Number of Farmers: 31 - 45 years old
	10	F46-60	REAL		Number of Farmers: 46 - 60 years old
	11	F>60	REAL		Number of Farmers: Over 60 years old
	12	fallal	INTEGER		Flag for errors: (exp.form)
TABLA_7	LAND APTITUDES, SLOPE OF LAND AND ENVIRONMENTAL FACTORS				
	1	ccountry	TEXT	1	yes Country code
	2	TLAlan	REAL		Land Aptitude: Total Land Area
	3	cullan	REAL		Land Aptitude: Total Cultivable Land (exp.form)
	4	w/olan	REAL		Land Aptitude: Cultivable w/o limitations
	5	modlan	REAL		Land Aptitude: Cultivable with Moderate limitations
	6	strlan	REAL		Land Aptitude: Cultivable with Strong limitations
	7	paslan	REAL		Land Aptitude: Pasture/tree crops
	8	perlan2	REAL		Land Aptitude: Permanent tree crops
	9	natlan	REAL		Land Aptitude: Natural Forest
	10	nonlan	REAL		Land Aptitude: Non-agricultural
	11	S0-5	REAL		Slope of Land: 0 - 5
	12	S6-10	REAL		Slope of Land: 6 - 10
	13	S11-20	REAL		Slope of Land: 11 - 20
	14	S21-30	REAL		Slope of Land: 21 - 30
	15	S>30	REAL		Slope of Land: Over 30
	16	higalt	REAL		Environment Factor: Altitude highest point
	17	lowalt	REAL		Environment Factor: Altitude lowest point
	18	higtea	REAL		Environment Factor: Temperature high average
	19	lowtea	REAL		Environment Factor: Temperature low average
	20	meatea	REAL		Environment Factor: Temperature mean annual
	21	higrel	REAL		Environment Factor: Relative humidity high average
	22	lowrel	REAL		Environment Factor: Relative humidity low average
	23	mearel	REAL		Environment Factor: Relative humidity mean annual
	24	higrai	REAL		Environment Factor: Rain fall high average
	25	lowrai	REAL		Environment Factor: Rain fall low average
	26	mearai	REAL		Environment Factor: Rain fall mean annual
	27	wetra	TEXT	3	Environment Factor: Rain fall wettest month



The page contains extremely faint and illegible text, likely bleed-through from the reverse side of the paper. The text is too light to be accurately transcribed.

TABLES	COLUMNS				
	#	NAME	TYPE	LENGTH	KEY DESCRIPTION
	28	dryrai	TEXT	3	Environment Factor: Rain fall driest month
	29	fallal	INTEGER		Flag for errors: (exp.form)
	30	falla0	INTEGER		Flag for errors: (exp.form)
<b>TABLA_B</b>	<b>LAND USE, NUMBER, SIZE AND AVERAGES OF PARCELS PER HOLDING</b>				
	1	ccountry	TEXT	1	yes Country code
	2	year	TEXT	2	yes Year
	3	cod_c_y	TEXT	3	yes Country-Year Code (exp.form)
	4	TAGuse	REAL		Land use: Total Land by Agricultural use (exp.form)
	5	Ltemuse	REAL		Land use: Total Land under Temporary Crops
	6	Ltreuse	REAL		Land use: Land under Tree Crops
	7	Lculuse	REAL		Land use: Grassland-Cultivated
	8	Luncuse	REAL		Land use: Grassland-Uncultivated
	9	Lforuse	REAL		Land use: Forest/Woodland
	10	Lnonuse	REAL		Land use: Non-agricultural use
	11	S<.5A	REAL		Number of Parcels per Holding: Holding < 0.5
	12	S<.5B	REAL		Number of Parcels per Holding: Area occupied < 0.5
	13	S<.5C	REAL		Number of Parcels per Holding: Average number of parcels < 0.5
	14	S<.5D	REAL		Number of Parcels per Holding: Average size of Parcels < 0.5
	15	S.5-1A	REAL		Number of Parcels per Holding: Holding 0.5 - 1.0
	16	S.5-1B	REAL		Number of Parcels per Holding: Area occupied 0.5 - 1.0
	17	S.5-1C	REAL		Number of Parcels per Holding: Average number of parcels 0.5 - 1.0
	18	S.5-1D	REAL		Number of Parcels per Holding: Average size of Parcels 0.5 - 1.0
	19	S1-2A	REAL		Number of Parcels per Holding: Holding 1.0 - 2.0
	20	S1-2B	REAL		Number of Parcels per Holding: Area occupied 1.0 - 2.0
	21	S1-2C	REAL		Number of Parcels per Holding: Average number of parcels 1.0 - 2.0
	22	S1-2D	REAL		Number of Parcels per Holding: Average size of Parcels 1.0 - 2.0
	23	S2-5A	REAL		Number of Parcels per Holding: Holding 2.0 - 5.0
	24	S2-5B	REAL		Number of Parcels per Holding: Area occupied 2.0 - 5.0
	25	S2-5C	REAL		Number of Parcels per Holding: Average number of parcels 2.0 - 5.0
	26	S2-5D	REAL		Number of Parcels per Holding: Average size of Parcels 2.0 - 5.0
	27	S5-10A	REAL		Number of Parcels per Holding: Holding 5.0 - 10.0
	28	S5-10B	REAL		Number of Parcels per Holding: Area occupied 5.0 - 10.0
	29	S5-10C	REAL		Number of Parcels per Holding: Average number of parcels 5.0 - 10.0
	30	S5-10D	REAL		Number of Parcels per Holding: Average size of Parcels 5.0 - 10.0
	31	S10-20A	REAL		Number of Parcels per Holding: Holding 10.0 - 20.0
	32	S10-20B	REAL		Number of Parcels per Holding: Area occupied 10.0 - 20.0
	33	S10-20C	REAL		Number of Parcels per Holding: Average number of parcels 10.0 - 20.0
	34	S10-20D	REAL		Number of Parcels per Holding: Average size of Parcels 10.0 - 20.0
	35	S20-30A	REAL		Number of Parcels per Holding: Holding 20.0 - 30.0
	36	S20-30B	REAL		Number of Parcels per Holding: Area occupied 20.0 - 30.0
	37	S20-30C	REAL		Number of Parcels per Holding: Average number of parcels 20.0 - 30.0
	38	S20-30D	REAL		Number of Parcels per Holding: Average size of Parcels 20.0 - 30.0
	39	S>30A	REAL		Number of Parcels per Holding: Holding over 30.0
	40	S>30B	REAL		Number of Parcels per Holding: Area occupied over 30.0
	41	S>30C	REAL		Number of Parcels per Holding: Average number of parcels over 30.0
	42	S>30D	REAL		Number of Parcels per Holding: Average size of Parcels over 30.0
	43	TOTA	REAL		Total Number of Parcels per Holding: Holding

中  
華  
大  
學  
人  
文  
學  
系  
博  
士  
論  
文  
集



TABLES	COLUMNS					
	#	NAME	TYPE	LENGTH	KEY	DESCRIPTION
	44	TOTB	REAL			Total Number of Parcels per Holding: Area occupied
	45	TOTC	REAL			Total Number of Parcels per Holding: Average number of parcels
	46	TOTD	REAL			Total Number of Parcels per Holding: Average size of Parcels
	47	AVEfarm	REAL			Total Number of Parcels per Holding: Size average per holding
	48	falla1	INTEGER			Flag for errors: (exp.form)
TABLA_9	DISTRIBUTION OF FARMS BY TYPE OF TENURE					
	1	ccountry	TEXT	1	yes	Country code
	2	year	TEXT	2	yes	Year
	3	cod_c_y	TEXT	3	yes	Country-Year Code (exp.form)
	4	indten1	REAL			Owned by Individuals: Number
	5	indten2	REAL			Owned by Individuals: Acreage
	6	famten1	REAL			Owned by Families: Number
	7	famten2	REAL			Owned by Families: Acreage
	8	parten1	REAL			Part owned and Part rented: Number
	9	parten2	REAL			Part owned and Part rented: Acreage
	10	manten1	REAL			Managed for Others: Number
	11	manten2	REAL			Managed for Others: Acreage
	12	renten1	REAL			Rented/Leased: Number
	13	renten2	REAL			Rented/Leased: Acreage
	14	shaten1	REAL			Share Cropped: Numbers
	15	shaten2	REAL			Share Cropped: Acreage
	16	lanten1	REAL			'Landless' Farmers: Number
	17	lanten2	REAL			'Landless' Farmers: Acreage
	18	othten1	REAL			Others: Number
	19	othten2	REAL			Others: Acreage
	20	TOTten1	REAL			Total: Number (exp.form)
	21	TOTten2	REAL			Total: Acreage (exp.form)
	22	falla1	INTEGER			Flag for errors: (exp.form)
TABLA100	SEASONALITY OF SELECTED CROPS - (ROOT)					
	1	ccountry	TEXT	1	yes	Country Code
TABLA_10	SEASONALITY OF SELECTED CROPS - (DATA)					
	1	ccountry	TEXT	1	yes	Country Code
	2	cproduct	TEXT	2	yes	Product Code
	3	numcos	TEXT	1	yes	Number of Crop or Season
	4	cod_10	TEXT	4	yes	Country-Product-Season code (exp.form)
	5	nproduct	TEXT	15		Name of Product
	6	desde	TEXT	10		Range of Season: first month
	7	hasta	TEXT	10		Range of Season: last month
	8	peak	TEXT	10		Peak month of Season
	9	falla10	INTEGER			Flag for errors: (exp.form)



TABLES	COLUMNS				
	#	NAME	TYPE	LENGTH	KEY DESCRIPTION
TABLA9_1	AGRICULTURAL CREDIT				
	1	ccountry	TEXT	1	Country Code
	2	year	TEXT	2	Year
	3	cod_c_y	TEXT	3	Country-Year Code (exp.form)
	4	foonum1	REAL		Number of Credit Approved for Food Crops
	5	foonum2	REAL		Number of Credit Disbursed for Food Crops
	6	foovol1	REAL		Value of Credit Approved for Food Crops
	7	foovol2	REAL		Value of Credit Disbursed for Food Crops
	8	expnum1	REAL		Number of Credit Approved for Export Crops
	9	expnum2	REAL		Number of Credit Disbursed for Export Crops
	10	expvol1	REAL		Value of Credit Approved for Export Crops
	11	expvol2	REAL		Value of Credit Disbursed for Export Crops
	12	vegnum1	REAL		Number of Credit Approved for Vegetables
	13	vegnum2	REAL		Number of Credit Disbursed for Vegetables
	14	vegvol1	REAL		Value of Credit Approved for Vegetables
	15	vegvol2	REAL		Value of Credit Disbursed for Vegetables
	16	tlivnum1	REAL		Number of Credit Approved for Livestock (exp.form)
	17	tlivnum2	REAL		Number of Credit Disbursed for Livestock (exp.form)
	18	tlivvol1	REAL		Value of Credit Approved for Livestock (exp.form)
	19	tlivvol2	REAL		Value of Credit Disbursed for Livestock (exp.form)
	20	shenum1	REAL		Number of Credit Approved for Sheeps
	21	shenum2	REAL		Number of Credit Disbursed for Sheeps
	22	shevol1	REAL		Value of Credit Approved for Sheeps
	23	shevol2	REAL		Value of Credit Disbursed for Sheeps
	24	goanum1	REAL		Number of Credit Approved for Goats
	25	goanum2	REAL		Number of Credit Disbursed for Goats
	26	goavol1	REAL		Value of Credit Approved for Goats
	27	goavol2	REAL		Value of Credit Disbursed for Goats
	28	catnum1	REAL		Number of Credit Approved for Cattles
	29	catnum2	REAL		Number of Credit Disbursed for Cattles
	30	catvol1	REAL		Value of Credit Approved for Cattles
	31	catvol2	REAL		Value of Credit Disbursed for Cattles
	32	chinum1	REAL		Number of Credit Approved for Chicken
	33	chinum2	REAL		Number of Credit Disbursed for Chicken
	34	chivol1	REAL		Value of Credit Approved for Chicken
	35	chivol2	REAL		Value of Credit Disbursed for Chicken
	36	pignum1	REAL		Number of Credit Approved for Pigs
	37	pignum2	REAL		Number of Credit Disbursed for Pigs
	38	pigvol1	REAL		Value of Credit Approved for Pigs
	39	pigvol2	REAL		Value of Credit Disbursed for Pigs
	40	TOTnum1	REAL		Total Number of Credit Approved
	41	TOTnum2	REAL		Total Number of Credit Disbursed
	42	TOTvol1	REAL		Total Value of Credit Approved
	43	TOTvol2	REAL		Total Value of Credit Disbursed

Handwritten text, likely bleed-through from the reverse side of the page. The characters are vertically oriented and appear to be in a traditional East Asian script, possibly Chinese or Japanese. The text is partially obscured by the binding edge of the book.

TABLES	COLUMNS				
	#	NAME	TYPE	LENGTH	KEY DESCRIPTION
TABLA_5	FOODS IMPORTS, AND VOLUME AND VALUE OF EXPORTS OF AGRICULTURAL PRODUCE				
	1	ccountry	TEXT	1	yes Country code
	2	year	TEXT	2	yes Year
	3	cod_c_y	TEXT	3	yes Country-Year Code (exp.form)
	4	TFfoo	REAL		Total Food Imports (FLtab5: see expression)
	5	meafoo	REAL		Food imports: Meat and Meat Production
	6	eggfoo	REAL		Food imports: Eggs and Dairy
	7	fisfoo	REAL		Food imports: Fish and Crust.
	8	cerfoo	REAL		Food imports: Cereals and Preparations
	9	vegfoo	REAL		Food imports: Vegetables
	10	frufoo	REAL		Food imports: Fruits
	11	sugfoo	REAL		Food imports: Sugar
	12	coffoo	REAL		Food imports: Coffee, Cocoa, Species
	13	feefoo	REAL		Food imports: Feed Stuff for Animals
	14	edifoo	REAL		Food imports: Edible oils
	15	othfoo	REAL		Food imports: Other Foods
	16	fruvol1	REAL		Vol.Val.Exp.Agr.Prod.: ExtraRegional: Fruits Volume
	17	fruvall	REAL		Vol.Val.Exp.Agr.Prod.: ExtraRegional: Fruits Value
	18	vegvoll	REAL		Vol.Val.Exp.Agr.Prod.: ExtraRegional: Vegetables Volume
	19	vegval1	REAL		Vol.Val.Exp.Agr.Prod.: ExtraRegional: Vegetables Value
	20	roovoll	REAL		Vol.Val.Exp.Agr.Prod.: ExtraRegional: Root-crops Volume
	21	rooval1	REAL		Vol.Val.Exp.Agr.Prod.: ExtraRegional: Root-crops Value
	22	ornvoll	REAL		Vol.Val.Exp.Agr.Prod.: ExtraRegional: Ornaments Volume
	23	ornval1	REAL		Vol.Val.Exp.Agr.Prod.: ExtraRegional: Ornaments Value
	24	othvoll	REAL		Vol.Val.Exp.Agr.Prod.: ExtraRegional: Others Volume
	25	othval1	REAL		Vol.Val.Exp.Agr.Prod.: ExtraRegional: Others Value
	26	TOTvol1	REAL		Vol.Val.Exp.Agr.Prod.: ExtraRegional: Total Volume (exp.form)
	27	TOTval1	REAL		Vol.Val.Exp.Agr.Prod.: ExtraRegional: Total Value (exp.form)
	28	fruvol2	REAL		Regional Agricultural Produce: Fruits Volume
	29	fruvall2	REAL		Vol.Val.Exp.Agr.Prod.: Regional: Fruits Value
	30	vegvoll2	REAL		Regional Agricultural Produce: Vegetables Volume
	31	vegval2	REAL		Vol.Val.Exp.Agr.Prod.: Regional: Vegetables Value
	32	roovoll2	REAL		Vol.Val.Exp.Agr.Prod.: Regional: Root-crops Volume
	33	rooval2	REAL		Vol.Val.Exp.Agr.Prod.: Regional: Root-crops Value
	34	ornvoll2	REAL		Vol.Val.Exp.Agr.Prod.: Regional: Ornaments Volume
	35	ornval2	REAL		Vol.Val.Exp.Agr.Prod.: Regional: Ornaments Value
	36	othvoll2	REAL		Vol.Val.Exp.Agr.Prod.: Regional: Others Volume
	37	othval2	REAL		Vol.Val.Exp.Agr.Prod.: Regional: Others Value
	38	TOTvol2	REAL		Vol.Val.Exp.Agr.Prod.: Regional: Total Volume (exp.form)
	39	TOTval2	REAL		Total Value of Regional Agricultural Produce (FLtab5: see expression)
	40	TOTvol	REAL		Vol.Val.Exp.Agr.Prod.: Regional: Total Volume (exp.form)
	41	TOTval	REAL		Vol.Val.Exp.Agr.Prod.: Total Value of Exports Agricultural Produce (exp.form)
42	fallal	INTEGER		Flag for errors (exp.form)	
TABLA_3	TYPE OF PRODUCTION, NUMBER OF FARMS, AREA, TOTAL PRODUCTION AND PRICES				
	1	ccountry	TEXT	1	yes Country code
	2	year	TEXT	2	yes Year



TABLES	COLUMNS				
	#	NAME	TYPE	LENGTH	KEY DESCRIPTION
	3	cod_c_y	TEXT	3	yes Country-Year Code (exp.form)
	4	cproduct	TEXT	2	yes Type of Production code
	5	cod_T3	TEXT	5	yes Country-Year-Cproduct Code (exp.form)
	6	numfar	REAL		Number of farms
	7	TOTprod	REAL		Total Production
	8	TOTarea	REAL		Total Area
	9	ALDarea	REAL		Stand Alone Area
	12	PRiagri	REAL		Price Paid for this Product: Farmer
	13	PRIcon	REAL		Price Paid for this Product: Consumer
	14	PRImay	REAL		Price Paid for this Product: Wholesale
TABLA15	AGRICULTURAL EXPORTS BY TYPE OF PRODUCTION AND COUNTRY OF DESTINATION - (ROOT)				
	1	ccountry	TEXT	1	yes Exports Country Code
	2	year	TEXT	2	yes Year
	3	cproduct	TEXT	2	yes Type of Production code
	4	cod_15	TEXT	5	yes Country-Year-Product Code (exp.form)
TABLA151	AGRICULTURAL EXPORTS BY TYPE OF PRODUCTION AND COUNTRY OF DESTINATION - (DATA)				
	1	cod_15	TEXT	5	yes Exports Country-Year-Product Code (exp.form)
	2	ccoerce	TEXT	2	yes Destination Country Code
	3	cod_151	TEXT	7	yes Exports Country-Year-Product-Destination Country Code (exp.form)
	3	cod_151	TEXT	7	yes Exports Country-Year-Destination Country-Product Code (exp.form)
	4	ncountry	TEXT	15	Destination country name
	5	vol_31	REAL		Volume of Exports
	6	val_31	REAL		Value of Exports
	7	falla151	INTEGER		Flag for errors: (exp.form)
TABLA16	AGRICULTURAL IMPORTS BY TYPE OF PRODUCTION AND COUNTRY OF DESTINATION - (ROOT)				
	1	ccountry	TEXT	1	yes Imports Country Code
	2	year	TEXT	2	yes Year
	3	cproduct	TEXT	2	yes Type of Production code
	4	cod_16	TEXT	5	yes Country-Year-Product Code (exp.form)
TABLA161	AGRICULTURAL IMPORTS BY TYPE OF PRODUCTION AND COUNTRY OF ORIGIN - (DATA)				
	1	cod_16	TEXT	5	yes Imports Country-Year-Product Code (exp.form)
	2	ccoerce	TEXT	2	yes Origin Country Code
	3	cod_161	TEXT	7	yes Country-Year-Product-Origin Country Code (exp.form)
	4	cod_161a	TEXT	7	yes Imports Country-Year-Origin Country-Product Code (exp.form)
	5	ncountry	TEXT	15	Origin Country name
	6	vol_32	REAL		Volume of Imports
	7	val_32	REAL		Value of Imports
	8	falla161	INTEGER		Flag for errors: (exp.form)





TABLES	COLUMNS				
	#	NAME	TYPE	LENGTH	KEY DESCRIPTION
TABLA_11	ANIMAL POPULATION, DISTRIBUTION OF LIVESTOCK BY NUMBER OF HEADS				
	1	ccountry	TEXT	1	yes Country Code
	2	year	TEXT	2	yes Year
	3	cod_c_y	TEXT	3	yes Country-Year Code (exp.form)
	4	swi1	REAL		Animal Population-SWINE: Sows
	5	swi2	REAL		Animal Population-SWINE: Boars
	6	swi3	REAL		Animal Population-SWINE: Piglets
	7	Tswi	REAL		Animal Population-SWINE: Total (exp.form)
	8	pou1	REAL		Animal Population-Poultry: Layers
	9	pou2	REAL		Animal Population-Poultry: Broilers
	10	Tpou	REAL		Animal Population-Poultry: Poultry (exp.form)
	11	bee1	REAL		Animal Population-BEEF CATTLE: Breeding Cows
	12	bee2	REAL		Animal Population-BEEF CATTLE: Heifers 2 - 3 years old
	13	bee3	REAL		Animal Population-BEEF CATTLE: Heifers 4 - 2 years old
	14	bee4	REAL		Animal Population-BEEF CATTLE: Calves < 1 year old
	15	bee5	REAL		Animal Population-BEEF CATTLE: Bulls > 3 years old
	16	bee6	REAL		Animal Population-BEEF CATTLE: Bulls > 2 years old
	17	bee7	REAL		Animal Population-BEEF CATTLE: Bulls > 1 year old
	18	bee8	REAL		Animal Population-BEEF CATTLE: Steers
	19	Tbee	REAL		Animal Population-BEEF CATTLE: Total (exp.form)
	20	dai1	REAL		Animal Population-DAIRY HERD: Breeding Cows
	21	dai2	REAL		Animal Population-DAIRY HERD: Heifers 2 -3 years old
	22	dai3	REAL		Animal Population-DAIRY HERD: Heifers 4 -2 years old
	23	dai4	REAL		Animal Population-DAIRY HERD: Calves < 1 year old
	24	dai5	REAL		Animal Population-DAIRY HERD: Bulls > 3 years old
	25	dai6	REAL		Animal Population-DAIRY HERD: Bulls > 2 years old
	26	dai7	REAL		Animal Population-DAIRY HERD: Bulls > 1 year old
	27	dai8	REAL		Animal Population-DAIRY HERD: Steers
	28	Tdai	REAL		Animal Population-DAIRY HERD: Total (exp.form)
	29	she1	REAL		Animal Population-SHEEP & GOATS : Sheep
	30	goal	REAL		Animal Population-SHEEP & GOATS: Goats
	31	Tshegoa	REAL		Animal Population-SHEEP & GOATS: Total (exp.form)
	32	cat1_4	REAL		Distribution of Livestock by # of Heads: Cattle 1 - 4
	33	she1_4	REAL		Distribution of Livestock by # of Heads: Sheep/Goats 1 - 4
	34	swi1_4	REAL		Distribution of Livestock by # of Heads: Swine 1 - 4
	35	pou1_4	REAL		Distribution of Livestock by # of Heads: Poultry 1 - 4
	36	oth1_4	REAL		Distribution of Livestock by # of Heads: Others 1 - 4
	37	cat5_9	REAL		Distribution of Livestock by # of Heads: Cattle 5 - 9
	38	she5_9	REAL		Distribution of Livestock by # of Heads: Sheep/Goats 5 - 9
	39	swi5_9	REAL		Distribution of Livestock by # of Heads: Swine 5 - 9
	40	pou5_9	REAL		Distribution of Livestock by # of Heads: Poultry 5 - 9
	41	oth5_9	REAL		Distribution of Livestock by # of Heads: Others 5 - 9
	42	cat10_14	REAL		Distribution of Livestock by # of Heads: Cattle 10 - 14
	43	she10_14	REAL		Distribution of Livestock by # of Heads: Sheep/Goats 10 - 14
	44	swi10_14	REAL		Distribution of Livestock by # of Heads: Swine 10 - 14
	45	pou10_14	REAL		Distribution of Livestock by # of Heads: Poultry 10 - 14
	46	oth10_14	REAL		Distribution of Livestock by # of Heads: Others 10 - 14



TABLES	COLUMNS				
	#	NAME	TYPE	LENGTH	KEY DESCRIPTION
	47	cat15_19	REAL		Distribution of Livestock by # of Heads: Cattle 15 - 19
	48	she15_19	REAL		Distribution of Livestock by # of Heads: Sheep/Goats 15 - 19
	49	swi15_19	REAL		Distribution of Livestock by # of Heads: Swine 15 - 19
	50	pou15_19	REAL		Distribution of Livestock by # of Heads: Poultry 15 - 19
	51	oth15_19	REAL		Distribution of Livestock by # of Heads: Others 15 - 19
	52	cat20_24	REAL		Distribution of Livestock by # of Heads: Cattle 20 - 24
	53	she20_24	REAL		Distribution of Livestock by # of Heads: Sheep/Goats 20 - 24
	54	swi20_24	REAL		Distribution of Livestock by # of Heads: Swine 20 - 24
	55	pou20_24	REAL		Distribution of Livestock by # of Heads: Poultry 20 - 24
	56	oth20_24	REAL		Distribution of Livestock by # of Heads: Others 20 - 24
	57	cat25	REAL		Distribution of Livestock by # of Heads: Cattle over 25
	58	she25	REAL		Distribution of Livestock by # of Heads: Sheep/Goats over 25
	59	swi25	REAL		Distribution of Livestock by # of Heads: Swine over 25
	60	pou25	REAL		Distribution of Livestock by # of Heads: Poultry over 25
	61	oth25	REAL		Distribution of Livestock by # of Heads: Others over 25
	62	tot_cat	REAL		Total Distribution of Livestock by # of Heads: Cattle
	63	tot_she	REAL		Total Distribution of Livestock by # of Heads: Sheep/Goats
	64	tot_swi	REAL		Total Distribution of Livestock by # of Heads: Swine
	65	tot_pou	REAL		Total Distribution of Livestock by # of Heads: Poultry
	66	tot_oth	REAL		Total Distribution of Livestock by # of Heads: Others
<b>TABLA_14</b>	<b>ANIMAL PRODUCTION AND SLAUGHTER HOUSE CAPACITY</b>				
	1	ccountry	TEXT	1	yes Country code
	2	year	TEXT	2	yes Year
	3	cod_c_y	TEXT	3	yes Country-Year Code (exp.form)
	4	Tailpla	REAL		Milk Processing Capacity: Total (exp.form)
	5	Tail_use	REAL		Milk Processing Capacity Total % in use (exp.form)
	6	frepla	REAL		Milk Processing Capacity: Fresh Milk
	7	fre_use	REAL		Milk Processing Capacity: Fresh Milk % in use (exp.form)
	8	evapla	REAL		Milk Processing Capacity: Evaporated Milk
	9	eva_use	REAL		Milk Processing Capacity: Milk % in use (exp.form)
	10	conpla	REAL		Milk Processing Capacity: Condensed Milk
	11	con_use	REAL		Milk Processing Capacity: Condensed % in use (exp.form)
	12	skipla	REAL		Milk Processing Capacity : Skimmed Milk
	13	ski_use	REAL		Milk Processing Capacity: Skimmed % in use (exp.form)
	14	chepla	REAL		Milk Processing Capacity: Cheese
	15	che_use	REAL		Milk Processing Capacity: Cheese % in use (exp.form)
	16	yogpla	REAL		Milk Processing Capacity: Yogurt
	17	yog_use	REAL		Milk Processing Capacity: Yogurt % in use (exp.form)
	18	icepla	REAL		Milk Processing Capacity: Ice Cream
	19	ice_use	REAL		Milk Processing Capacity: Ice Cream % in use (exp.form)
	20	othpla	REAL		Milk Processing Capacity: Other
	21	oth_use	REAL		Milk Processing Capacity: Other % in use (exp.form)
	22	catday	REAL		Slaughter House Capacity: Cattle
	23	catuse	REAL		Slaughter House Capacity: Cattle % in use (exp.form)
	24	pigday	REAL		Slaughter House Capacity: Pigs
	25	piguse	REAL		Slaughter House Capacity: Pigs % in use (exp.form)
	26	sheday	REAL		Slaughter House Capacity: Sheep/Goats



TABLES	COLUMNS				
	#	NAME	TYPE	LENGTH	KEY DESCRIPTION
	27	sheuse	REAL		Slaughter House Capacity: Sheep/Goats % in use (exp.form)
	28	pouday	REAL		Slaughter House Capacity: Poultry
	29	pouuse	REAL		Slaughter House Capacity: Poultry % in use (exp.form)
	30	othday	REAL		Slaughter House Capacity: Other
	31	othuse	REAL		Slaughter House Capacity: Other % in use (exp.form)
	32	TOTday	REAL		Total Slaughter House Capacity: Head/day
	33	TOTuse	REAL		Total Slaughter House Capacity: % in use (exp.form)
	34	catpro	REAL		Meat Production: Cattle
	35	shepro	REAL		Meat Production: Sheep
	36	goapro	REAL		Meat Production: Goats
	37	poupro	REAL		Meat Production: Poultry
	38	pigpro	REAL		Meat Production: Pigs
	39	othpro	REAL		Meat Production: Others
	40	TOTpro	REAL		Total Meat Production (exp.form)
	41	CATmil	REAL		Milk Production: Cattle
	42	GOAmil	REAL		Milk Production: Goats
	43	OTHmil	REAL		Milk Production: Others
	44	TOTmil	REAL		Total Milk Production (exp.form)
	45	TMILpro	REAL		Total Milk Production (exp.form)
	46	FREpro	REAL		Production of Milk by-products: Fresh Milk
	47	EVApro	REAL		Production of Milk by-products: Evaporated Milk
	48	CONpro	REAL		Production of Milk by-products: Condensed Milk
	49	SKIpro	REAL		Production of Milk by-products: Skimmed Milk
	50	FULpro	REAL		Production of Milk by-products: Full Cream Dried
	51	CHEpro	REAL		Production of Milk by-products: Cheese
	52	ICEpro	REAL		Production of Milk by-products: Ice Cream
	53	OTHSpro	REAL		Production of Milk by-products: Others
<b>TABLA_13</b>	<b>AGRO-PROCESSOR FIRM INFORMATION - (DATA)</b>				
	1	ccountry	TEXT	1	yes Country Code
	2	cod_13	INTEGER		yes Order Number assigned to Firm (exp.form)
	3	nameagr	TEXT	20	Name of Firm
	4	yeaagr	TEXT	2	Years Activities Initiated
	5	fulagr	REAL		Number of full-time employees
	6	paragr	REAL		Number of part-time employess
	7	falla1	INTEGER		Flag for errors: (exp.form)
<b>TABLA131</b>	<b>AGRO-PROCESSOR FIRMS: INPUTS (DATA)</b>				
	1	ccountry	TEXT	1	yes Agro-processors Firms Country Code
	2	cod_13	INTEGER		yes Order Nuer Assigned to Firm (exp.form)
	3	nameraw	TEXT	12	yes Name of raw material
	4	unitraw	TEXT	8	Raw material unit
	5	quanraw	REAL		Raw material quantity
	6	falla131	INTEGER		Flag for errors: (exp.form)



TABLES	COLUMNS					
	#	NAME	TYPE	LENGTH	KEY	DESCRIPTION
TABLA132	AGRO-PROCESSOR FIRMS: OUTPUTS (DATA)					
	1	ccountry	TEXT	1	yes	Agro-processors Firms country code
	2	cod_13	INTEGER		yes	Order Number Assigned to Firm (exp.forn)
	3	nameout	TEXT	12	yes	Name of output obtained
	4	unitout	TEXT	8		Output obtained unit
	5	quantout	REAL			Output obtained quantity
	6	falla132	INTEGER			Flag for errors: (exp.forn)
TYEAR	YEAR VALIDS TO USE IN THIS DATABASE					
	1	YEAR	TEXT	2	yes	Valid year to use in Database
TYPEINFO	PARAMETERS USED IN ENTRY/EDIT PROGRAMS					
	1	num_info	INTEGER		yes	Option Number in Information Menu
	2	tit_info	TEXT	100		Title of Option
	3	ent_info	TEXT	8		Form used for entering data
	4	tab_info	TEXT	8		Table to delete from
	5	col_info	TEXT	8		Column to delete
	6	bor_info	TEXT	1		Delete column's data from this Table? (Y/N)
	7	edicion	TEXT	8		Program used to edit/look data
TYPEOUT	PARAMETERS USED IN OUTPUT PROGRAMS					
	1	num_rep	TEXT	2	yes	Option Number in Type of Report menu
	2	tit_rep	TEXT	75		Title of Report
	3	nom_rep	TEXT	8		name of Report
	5	mid_rep	TEXT	1		Width of Report
	6	typ_rep	TEXT	1		Type of Report: Menu option to group
	8	col_rep	TEXT	8		Column for searching WHERE
	9	Run_rep	TEXT	1		Run a Report Program? (Y/N)
	10	pro_rep	TEXT	8		Name of the Program to run
PROV11	TEMPORAL TABLE TO PREPARE REPORT R:TAB3					
	1	cod_161	TEXT	7		Import Country-Year-Product-Origin Country (to prepare report CUADRO -option [
	2	vol_31	REAL			Volume of Imports
	3	val_31	REAL			Value of Imports
PROV12	TEMPORAL TABLE TO PREPARE REPORT R:TAB3					
	1	cod_161	TEXT	7		Import-Export Country-Year-Product-Origin or Destination Country Code (program
	2	vol_31	REAL			Volume of Exports
	3	val_31	REAL			Value of Exports

Handwritten text, likely bleed-through from the reverse side of the page. The characters are vertically oriented and appear to be in a cursive or semi-cursive script, possibly a form of Chinese or Japanese calligraphy. The text is partially obscured by the binding edge of the document.



TABLES	COLUMNS				
	#	NAME	TYPE	LENGTH	KEY DESCRIPTION
	4	vol_32	REAL		Volume of Imports
	5	val_32	REAL		Value of Imports
	6	cod_t3	TEXT	5	yes Export-Import Country-Year-Product (program MQUADRO)
PROVI3	TEMPORAL TABLE TO PREPARE REPORT R:TAB3				
	1	cod_T3	TEXT	5	Export-Import Country-Year-Product Code (to prepare Report CUADRO; program MQUA
	2	TOTprod	REAL		Total Production Area ( Taken from Tabla_3)
	3	vol_31	REAL		Volume of Exports taken from TABLA151
	4	val_31	REAL		Value of Exports taken fro TABLA161
	5	vol_32	REAL		Volume of Imports taken from TABLA161
	6	val_32	REAL		Value of Imports taken fro TABLA161
	7	cod_161	TEXT	7	Export-Import Country-Year-Product-Destination or Origin Country taken from TAB
TEMP_R10	TEMPORAL TABLE TO PREPARE REPORT R:TAB3				
	1	cod_c_y	TEXT	3	y Country-Year Code in temporal table used to prepare report R:tab3 (option [10]
	1	numfar	TEXT	3	y Number of Farmers in temporal table used to prepare report R:tab3 (option [10]



Handwritten notes, mostly illegible due to blurring. Some faint words like "Date" and "Page" are visible at the top.

## RBASE FUNCTION KEYS

<u>Key</u>	<u>Unshifted</u>	<u>Shifted</u>
[F1]	Insert a line Insert a column (Definition Express) Insert an option (Application Express)	Define, redefine, or delete a user-defined key map
[F2]	Delete a line Delete a row (Browse) Delete a column (Definition Express) Delete an option (Application Express) Erase a field (Edit/Enter)	Delete a field (Forms & Reports Express) Delete a text block (RBEEdit) Erase from cursor to end of field (Edit/Enter)
[F3]	Display columns, variables Display menu tree (Application Express) Display tables, columns (Definition Express)	Display the user-defined key map
[F4]	Repeat character toggle Pen up/Pen down toggle (Forms and Reports Express)	Repeat delete tier definition (Forms Express) Copy text block (RBEEdit)
[F5]	Reset row (Edit without form) Reset field value (Edit/Enter) Reset column definition (Definition Express) Reset option definition (Application Express) Reset characteristics (Forms Express)	Reset table value (Application Express)
[F6]	Locate field (Forms & Reports Express)	Options Menu (FileGateway) Mark a text block (RBEEdit)
[F7]	Previous Table (Forms Express) Previous Section (Reports Express) Previous Row (Edit/Enter)	Record an exec file
[F8]	Next Table (Forms Express) Next Section (Reports Express) Next Row (Edit/Enter)	Play back an exec file
[F9]	Expand sections (Reports Express) Expand regions (Forms Express) Next table or region (Edit/Enter)	



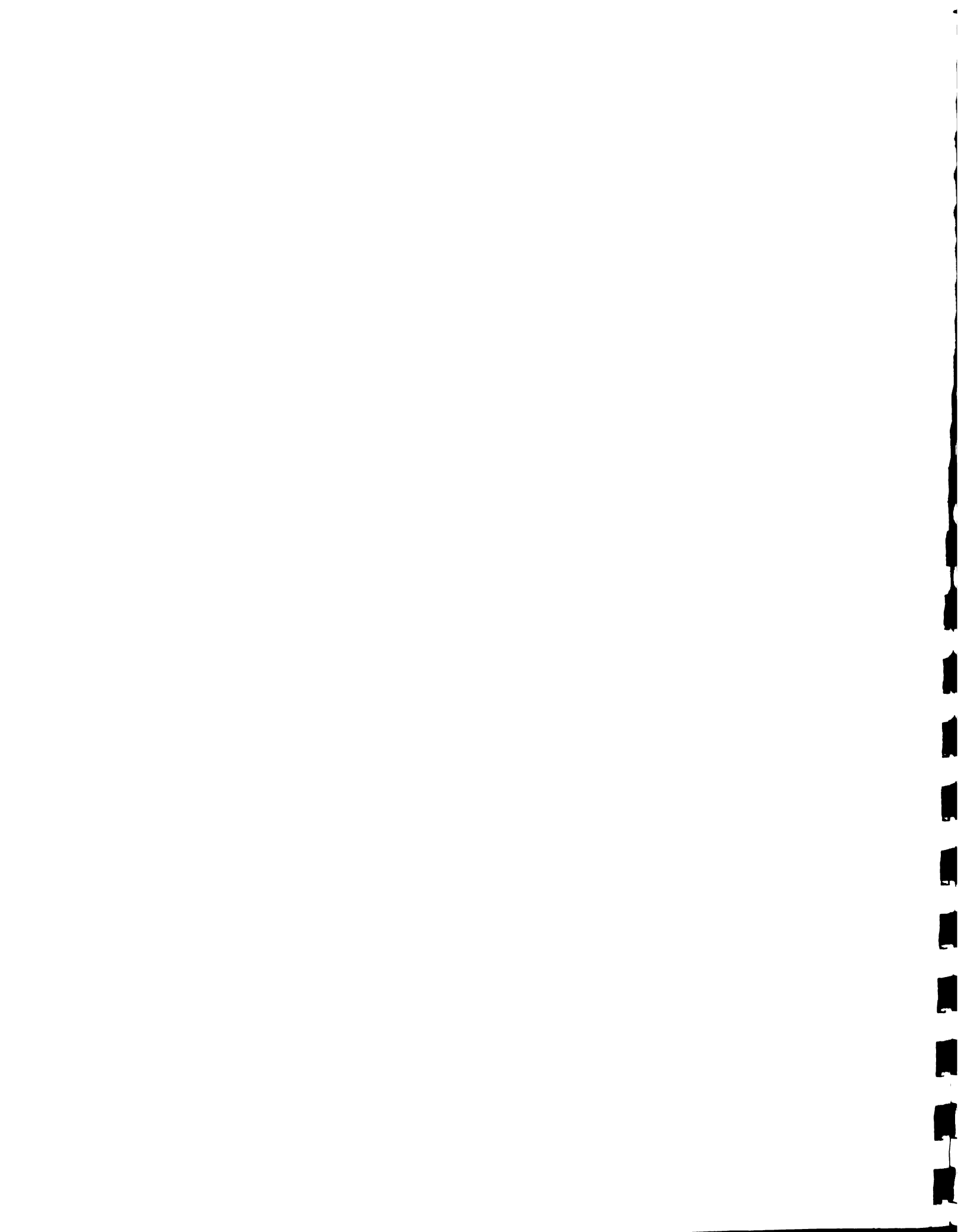
[F10] Help (All modules)

Help for definining key maps  
Toggle line 24 function key list



## RBASE FUNCTIONS

<u>Function</u>	<u>Returned Values and Description</u>
<b>Arithmetic and Mathematical Functions</b>	
(ABS(arg))	Absolute value of arg
(DIM(arg1, arg2))	Positive difference between arg1 and arg2
(EXPIarg))	Exponential e(exp) of arg (where e=2.7182818)
(LOG(arg))	Log base e of arg (where e=2.7182818)
(LOG10(arg))	Log base 10 of arg
(SQRT(arg))	Square root of arg
(AVE(list))	Average of the values in list
(MAX(list))	Maximum of the values in list
(MIN(list))	Minimum of the values in list
(MOD(arg1, arg2))	Modulus (remainder of arg1 divided by arg2)
SIGN(arg1, arg2))	Transfer sign of arg2 to arg1
<b>Trigonometric Functions</b>	
(ACOS(arg))	Trigonometric arccosine where arg is in the range -1 to 1, returning an angle in the range 0 to
(ASIN(arg))	Trigonometric arcsine where arg is in the range -1 to 1, returning an angle in the range - /2 to /2
(ATAN(arg))	Trigonometric arctangent where arg is any amount, returning an angle in the range - /2 to /2
(ATAN2(x, y))	Trigonometric arctangent of a coordinage angle
(COS(angle))	Trigonometric cosine
(SIN(angle))	Trigonometric sine
(TAN(angle))	Trigonometric tangent
(COSH(angle))	Hyperbolic cosine
(SINH(angle))	Hyperbolic sine
(TANH(angle))	Hyperbolic tangent





## ction

## Returned Values and Description

### Conversion Functions

INT(real))	Truncate real to real
NINT(real))	Round real to real
NT(real))	Truncate real to integer
INT(real))	Round real to integer
LOAT(integer))	Convert integer to real
TXT(arg))	Convert an internal value to a character string
ICHAR(chr))	Convert a single character to its ASCII integer value
CHAR(integer))	Convert an ASCII integer value to its corresponding character

### String Manipulation Functions

SFIL(chr,nchar))	Fill a text string with a specified character chr for number of characters nchar
(SGET(text,nchar,loc))	Select from text starting at loc for nchar characters
(SLEN(text))	Length of text
(SLOC(text,string))	Search text for string returning the location
(SMOVE(text,pos,nchar,string,loc))	Moves nchar characters from text starting at position pos to string starting at location loc
(SPUT(text,string,loc))	Move string into text starting at loc
(STRIM(text))	Remove trailing blanks from text
(ULC(text))	Convert text to lower case
(ICAP1(text))	Convert text to upper case
(CTR(text,width))	Center text in width characters
(LJS(text,width))	Left justify text in width characters
(RJS(text,width))	Right justify text in width characters

### Date and Time Functions

(RDATE(mon,day,yr))	Convert integer mon, day and yr to an internal date
(RTIME(hrs,min,sec))	Convert integer hrs, min and sec to an internal time
(JDATE(date))	Julian date of date in the form YYDDD (1900-1999 only)
(IDAY(date))	Integer day of the month of date
(IDWK(date))	Integer day of the week of date
(TDWK(date))	Text day of the week of date
(IMON(date))	Integer month of date
(TMON(date))	Text month name of date
(IYR(date))	Integer year of date
(IHR(time))	Integer hours of time
IMIN(time)	Integer minutes of time
ISEC(time)	Integer seconds of time

tion

cial

pat,

pv, :

pat

iv,

di

di

di

di

di

di

di

di

di

di

di

di

di

ction

Returned Values and Description

**Financial Functions**

FV(pmt, int, per))	Future value of a series of equal payments based on payment amount, interest rate, and number of compounding periods
FV2(pv, int, per))	Future value of present value based on interest rate and number of compounding periods
PV1(pmt, int, per))	Present value of a series of equal payments based on payment amount, interest rate, and number of compounding periods
PV2(fv, int, per))	Present value of a future value based on interest rate and number of compounding periods
PMT1(int, per, pv))	Amount of payment needed to pay off the present value based on number of compounding periods and interest rate
PMT2(int, per, fv))	Amount of payment needed based on a future value, interest rate, and number of compounding periods
RATE1(fv, pv, per))	Periodic interest rate required to return the future value based on present value and number of compounding periods
RATE2(fv, pmt, per))	Periodic interest rate required to return the future value based on payment and number of compounding periods
RATE3(pv, pmt, per))	Periodic interest rate required for an annuity based on present value and number of compounding periods to return a series of equal payments
TERM1(pv, int, fv))	Number of compounding periods for a return of future value based on present value and the interest rate
TERM2(pmt, int, fv))	Number of payment periods for a return of future value based on future value, payments, and the interest rate
TERM3(pmt, int, pv))	Number of payment periods for the present value balance to reach zero based on the payment and interest rate

**Logical Functions**

IFEQ(arg1, arg2, arg3, arg4))	IF arg1 EQ arg2 THEN arg3 ELSE arg4
IFLT(arg1, arg2, arg3, arg4))	IF arg1 LT arg2 THEN arg3 ELSE arg4
IFGT(arg1, arg2, arg3, arg4))	IF arg1 GT arg2 THEN arg3 ELSE arg4



ALT KEYS

	$\overline{\overline{213}}$	$\overline{\overline{205}}$	$\overline{\overline{194}}$
198	$\overline{\overline{F}}$	$\overline{\overline{H}}$	$\overline{\overline{= 181}}$
	$\overline{\overline{212}}$	$\overline{\overline{207}}$	$\overline{\overline{170}}$

$\neq 216$

201	$\overline{\overline{F}}$	$\overline{\overline{203}}$	$\overline{\overline{197}}$
196	$\overline{\overline{  }}$		$\overline{\overline{   196}}$
204	$\overline{\overline{  }}$	$\overline{\overline{205}}$	$\overline{\overline{   195}}$
199	$\overline{\overline{  }}$		$\overline{\overline{   182}}$
200	$\overline{\overline{L}}$	$\overline{\overline{202}}$	$\overline{\overline{   179}}$

$\neq 206$

218	$\overline{\overline{L}}$	$\overline{\overline{194}}$	$\overline{\overline{   191}}$
179	$\overline{\overline{ }}$		$\overline{\overline{   179}}$
195	$\overline{\overline{  }}$		$\overline{\overline{   180}}$
192	$\overline{\overline{L}}$	$\overline{\overline{  }}$	$\overline{\overline{   217}}$
		$\overline{\overline{193}}$	

$\neq 197$

$\neq 215$

253 = space.



